

# GPPH PRODUCTS

**PRO** **INOX** | **PLUS** **INOX** | **ECO** | **XWT** | **BSC** | **DIY** | **MWT** | **SOG**



make **WELDING**  
**SIMPLE** again



OFFER 2024

# **PROFESSIONAL WELDING TABLES**

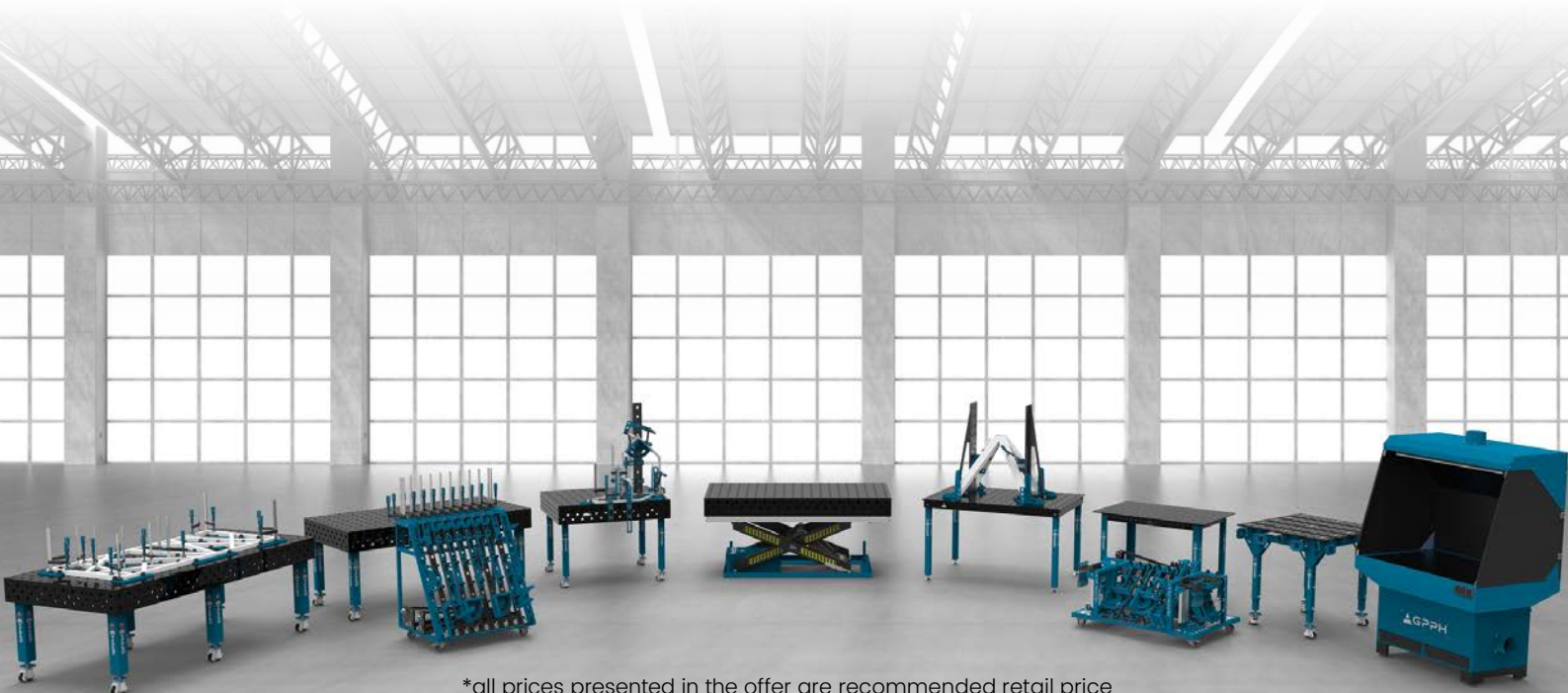


**MADE IN POLAND**



# TABLE OF CONTENTS

|   |    |
|---|----|
| 1. WELDING TABLES – TRADITIONAL   |    |
| ◦ PRO, PLUS, and ECO series – technical parameters .....                                  | 4  |
| ◦ PRO, PLUS, and ECO series – dimensions and price list – tables with legs on feet .....  | 6  |
| ◦ PRO, PLUS, and ECO series – dimensions and price list – tables with legs on wheels..... | 7  |
| ◦ PRO, PLUS, and ECO series – stainless steel covers .....                                | 8  |
| 2. WELDING TABLES – STAINLESS   |    |
| ◦ INOX series – technical parameters .....  | 9  |
| ◦ INOX series – dimensions and price list – tables with legs on feet .....                | 11 |
| ◦ INOX series – dimensions and price list – tables with legs on wheels.....               | 12 |
| 3. WELDING TABLE WEIGHTS  |    |
| ◦ Weights of traditional and stainless steel welding tables .....                         | 13 |
| 4. WELDING TABLES – MODULAR   |    |
| ◦ MWT series – technical parameters .....   | 14 |
| ◦ MWT series – dimensions and price list .....  | 15 |
| 5. WELDING TABLES – WELDING & ASSEMBLY TABLES   |    |
| ◦ BASIC series – technical parameters .....   | 16 |
| ◦ BASIC series – dimensions and price list – tables with legs on feet .....               | 17 |
| ◦ BASIC series – dimensions and price list – tables with legs on wheels .....             | 18 |
| ◦ BASIC series – weights of welding tables .....  | 19 |
| ◦ DIY series – technical parameters and price .....                                       | 20 |
| ◦ DIY series – toolkits .....   | 21 |
| 6. WELDING TABLES – LIFTING (with hydraulic lifting system)                               |    |
| ◦ XWT series – technical parameters .....   | 22 |
| ◦ XWT series – dimensions and price list .....  | 23 |
| 7. GRINDING-WELDING STATION   |    |
| ◦ SOG series – technical parameters .....   | 26 |
| ◦ SOG series – technical parameters and price list .....                                  | 27 |
| 8. TOOLS  |    |
| ◦ PRO series tools .....  | 28 |
| ◦ PLUS series tools .....   | 29 |
| ◦ ECO series tools .....  | 30 |
| ◦ Universal tools .....   | 31 |
| ◦ Tool trolleys .....   | 32 |
| ◦ Tools – price list .....  | 33 |
| ◦ Toolkits .....  | 35 |



\*all prices presented in the offer are recommended retail price

# WELDING TABLES – TRADITIONAL

PRO, PLUS, and ECO series – technical parameters

Traditional GPPH Welding Tables come in three series: PRO, PLUS, and ECO. Each of them is in as many as 10 versions of dimensions.

You will use them wherever precision during welding is needed. For example, you can use it for manual or robotic welding. As a result, your constructions will finally be made accurately, without unnecessary corrections!

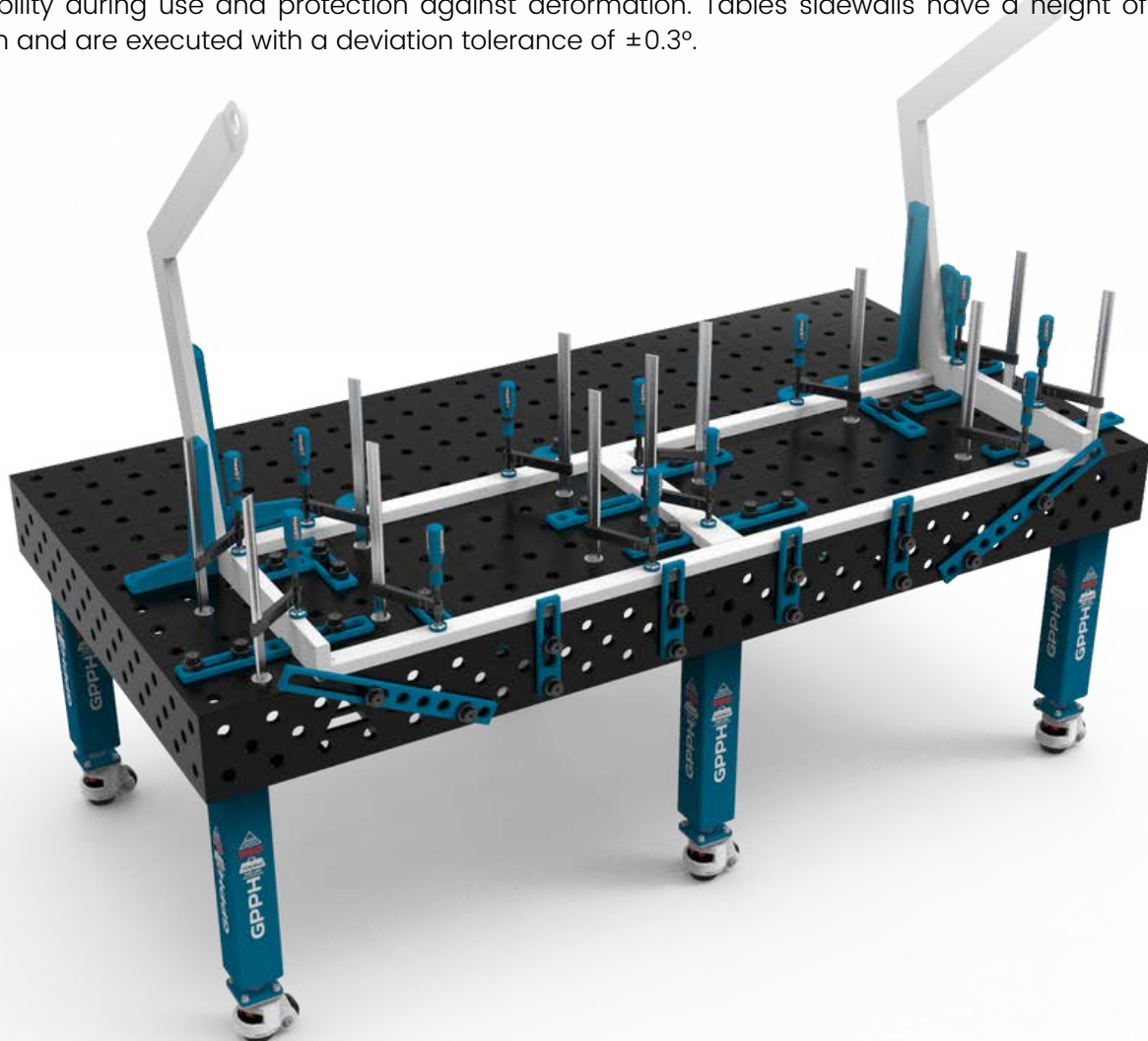
It also ensures ergonomic and fast work while maintaining the precision and repeatability of the structures. All tables are available with legs on feet or legs on wheels – the choice is up to you!

Depending on your preferences, you can choose PRO, PLUS, and ECO Welding Tables in hole systems:

- fi 28 mm in a 100x100 mm grid
- fi 28 mm in a diagonal grid
- fi 16 mm in a 100x100 mm grid
- fi 16 mm in a diagonal grid
- fi 16 mm in a 50x50 mm grid

Tables are made of material S355J2+N according to ISO 2768-1. Each table top has an engraved scale. The engraved scale is vertical and horizontal lines in a 100x100mm grid. It is a reference point when laying the constructions and when assembling tools. Using measuring tools, you can set your structure correctly to get the required dimension.

All tables have ribs, which results in a perfectly flat work surface. Ribs are arranged every 400 mm on average. The massive and rigid foundation of the table top guarantees the highest stability during use and protection against deformation. Tables sidewalls have a height of 200 mm and are executed with a deviation tolerance of  $\pm 0.3^\circ$ .





# WELDING TABLES – TRADITIONAL

PRO, PLUS, and ECO series – technical parameters

Check the table below for the differences between the series of GPPH welding tables:

| PARAMETER   | PRO SERIES   | PLUS SERIES  | ECO SERIES   |
|---|--------------|--------------|--------------|
| Tolerance on flatness for a table (on the whole worktop)* | ±0,3 mm      | ±0,3 mm      | ±0,5 mm      |
| Three grids of holes on the 4 sides                       | ✓            | ✓            | ✓            |
| Table top thickness                                       | 15 mm        | 12 mm        | 8 mm         |
| Chamfered and milled holes                                | ✓            | ✓            | ✗            |
| Chamfered holes from bottom                               | ✓            | ✓            | ✗            |
| Holes manufacturing tolerance                             | +0,05 mm     | +0,05 mm     | ±0,1 mm      |
| Leg profile   | 100x100x4 mm | 80x80x4 mm   | 60x60x4 mm   |
| Capacity  | 700 kg / leg | 500 kg / leg | 250 kg / leg |
| Total load capacity for a table with 4 legs               | 2 800 kg     | 2 000 kg     | 1 000 kg     |
| Total load capacity for a table with 6 legs               | 4 200 kg     | 3 000 kg     | 1 500 kg     |
| Total load capacity for a table with 8 legs               | 5 600 kg     | 4 000 kg     | 2 000 kg     |
| Milled table top edges                                    | ✓            | ✓            | ✗            |
| Number of dimensional versions                            | 10 versions  | 10 versions  | 10 versions  |

PRO, PLUS and ECO welding tables are available in the following sizes: 3000x1480 mm\*\*, 2400x1200 mm, 2000x1000 mm, 1500x1480 mm, 1500x1000 mm, 1200x1200 mm, 1200x1000 mm, 1200x800 mm, 1000x1000 mm, 1000x1000 mm.

To work on the PRO series welding tables, you will use milled tools from the PRO series, and for the PLUS and ECO series welding tables – tools from the PLUS series. Thanks to them, you can precisely make any 2D flat and 3D spatial construction. And all this in much less time! You will find the tool PRO series on page 28 and the PLUS series on page 29.

\*provided that the table is leveled correctly.

\*\* The 3000x1480 GPPH welding table consists of two 1500x1480 GPPH welding tables connected to each other.

# WELDING TABLES – TRADITIONAL

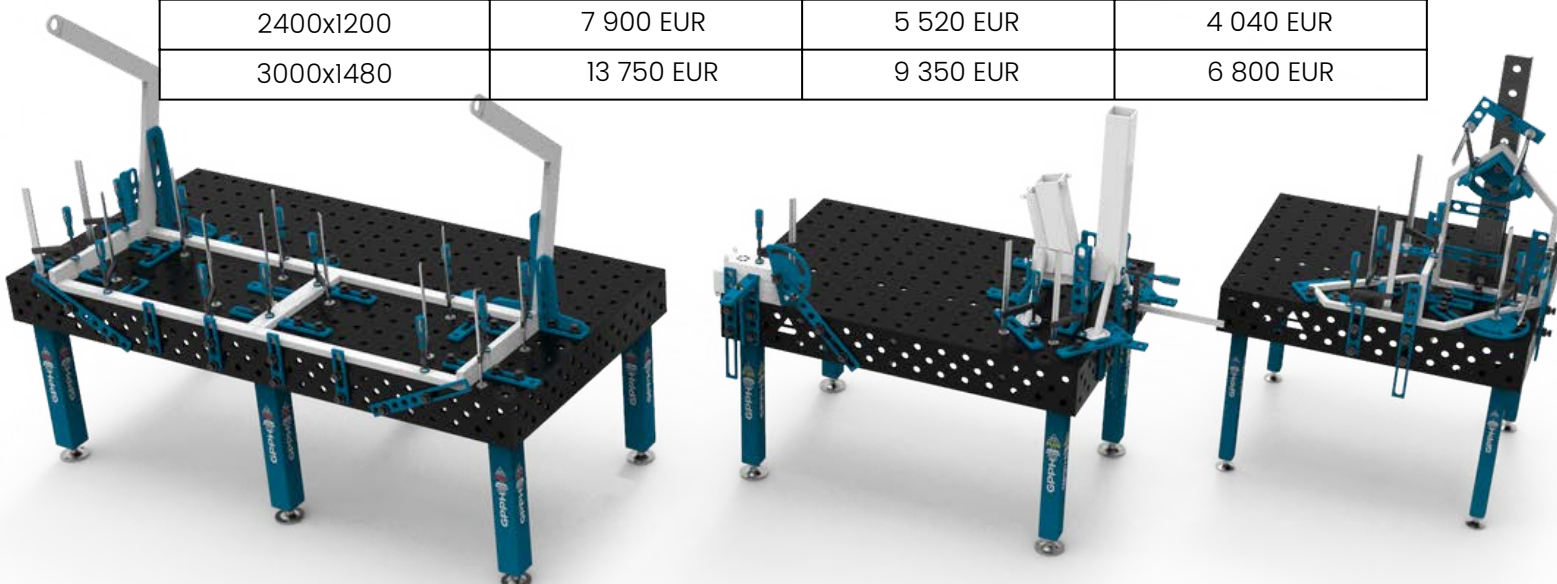
PRO, PLUS, and ECO series – dimensions and price list – tables with legs on feet

Price list for tables with legs on feet with a fi 28 mm or fi 16 mm hole system in a 100x100 mm grid:

| Table top size<br>[mm] | R.R.P.<br>PRO SERIES | R.R.P.<br>PLUS SERIES | R.R.P.<br>ECO SERIES |
|------------------------|----------------------|-----------------------|----------------------|
| 1000x600               | 2 940 EUR            | 2 050 EUR             | 1 530 EUR            |
| 1000x1000              | 3 400 EUR            | 2 480 EUR             | 1 920 EUR            |
| 1200x800               | 3 460 EUR            | 2 550 EUR             | 2 010 EUR            |
| 1200x1000              | 4 140 EUR            | 3 070 EUR             | 2 050 EUR            |
| 1200x1200              | 4 560 EUR            | 3 320 EUR             | 2 280 EUR            |
| 1500x1000              | 5 080 EUR            | 3 560 EUR             | 2 400 EUR            |
| 1500x1480              | 5 930 EUR            | 4 020 EUR             | 2 940 EUR            |
| 2000x1000              | 5 520 EUR            | 4 040 EUR             | 2 940 EUR            |
| 2400x1200              | 6 990 EUR            | 4 810 EUR             | 3 520 EUR            |
| 3000x1480              | 11 860 EUR           | 8 030 EUR             | 5 870 EUR            |

Price list for tables with legs on feet with a 28 mm or 16 mm hole system in a diagonal grid and for tables with a 16 mm hole system in a 50x50 mm grid:

| Table top size<br>[mm] | R.R.P.<br>PRO SERIES | R.R.P.<br>PLUS SERIES | R.R.P.<br>ECO SERIES |
|------------------------|----------------------|-----------------------|----------------------|
| 1000x600               | 3 520 EUR            | 2 550 EUR             | 1 720 EUR            |
| 1000x1000              | 4 000 EUR            | 3 040 EUR             | 2 110 EUR            |
| 1200x800               | 4 040 EUR            | 3 040 EUR             | 2 280 EUR            |
| 1200x1000              | 4 680 EUR            | 3 520 EUR             | 2 360 EUR            |
| 1200x1200              | 5 250 EUR            | 4 040 EUR             | 2 840 EUR            |
| 1500x1000              | 5 720 EUR            | 4 040 EUR             | 2 750 EUR            |
| 1500x1480              | 6 880 EUR            | 4 680 EUR             | 3 400 EUR            |
| 2000x1000              | 6 260 EUR            | 4 560 EUR             | 3 340 EUR            |
| 2400x1200              | 7 900 EUR            | 5 520 EUR             | 4 040 EUR            |
| 3000x1480              | 13 750 EUR           | 9 350 EUR             | 6 800 EUR            |





# WELDING TABLES – TRADITIONAL

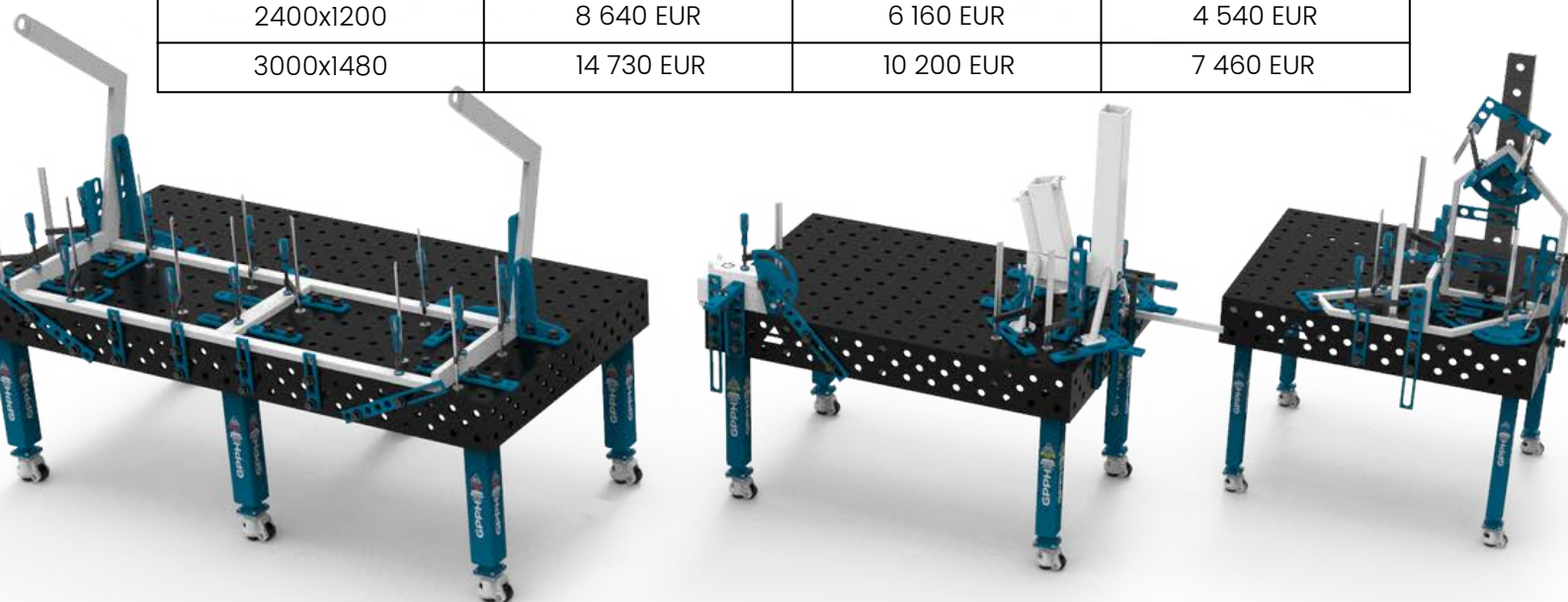
PRO, PLUS, and ECO series – dimensions and price list – tables with legs on wheels

Price list for tables with legs on wheels with a fi 28 mm or fi 16 mm hole system in a 100x100 mm grid:

| Table top size<br>[mm] | R.R.P.<br>PRO SERIES | R.R.P.<br>PLUS SERIES | R.R.P.<br>ECO SERIES |
|------------------------|----------------------|-----------------------|----------------------|
| 1000x600               | 3 430 EUR            | 2 480 EUR             | 1 860 EUR            |
| 1000x1000              | 3 900 EUR            | 2 900 EUR             | 2 250 EUR            |
| 1200x800               | 3 950 EUR            | 2 980 EUR             | 2 340 EUR            |
| 1200x1000              | 4 630 EUR            | 3 500 EUR             | 2 380 EUR            |
| 1200x1200              | 5 050 EUR            | 3 750 EUR             | 2 610 EUR            |
| 1500x1000              | 5 570 EUR            | 3 980 EUR             | 2 730 EUR            |
| 1500x1480              | 6 420 EUR            | 4 440 EUR             | 3 270 EUR            |
| 2000x1000              | 6 020 EUR            | 4 460 EUR             | 3 270 EUR            |
| 2400x1200              | 7 730 EUR            | 5 450 EUR             | 4 020 EUR            |
| 3000x1480              | 12 840 EUR           | 8 880 EUR             | 6 540 EUR            |

Price list for tables with legs on wheels with a 28 mm or 16 mm hole system in a diagonal grid and for tables with a 16 mm hole system in a 50x50 mm grid:

| Table top size<br>[mm] | R.R.P.<br>PRO SERIES | R.R.P.<br>PLUS SERIES | R.R.P.<br>ECO SERIES |
|------------------------|----------------------|-----------------------|----------------------|
| 1000x600               | 4 010 EUR            | 2 980 EUR             | 2 050 EUR            |
| 1000x1000              | 4 490 EUR            | 3 460 EUR             | 2 440 EUR            |
| 1200x800               | 4 530 EUR            | 3 480 EUR             | 2 610 EUR            |
| 1200x1000              | 5 170 EUR            | 3 940 EUR             | 2 690 EUR            |
| 1200x1200              | 5 750 EUR            | 4 460 EUR             | 3 170 EUR            |
| 1500x1000              | 6 210 EUR            | 4 460 EUR             | 3 080 EUR            |
| 1500x1480              | 7 370 EUR            | 5 100 EUR             | 3 270 EUR            |
| 2000x1000              | 6 750 EUR            | 4 980 EUR             | 3 680 EUR            |
| 2400x1200              | 8 640 EUR            | 6 160 EUR             | 4 540 EUR            |
| 3000x1480              | 14 730 EUR           | 10 200 EUR            | 7 460 EUR            |



# WELDING TABLES – TRADITIONAL

PRO, PLUS, and ECO series – stainless steel covers

For each welding table from the PRO, PLUS, and ECO series, you can buy a 1 mm thick stainless steel cover.

To transform the Traditional GPPH Welding Table into a table ideal for welding stainless steel, just put an overlay on it.

The hole patterns of the stainless steel cap are the same as the hole patterns of the GPPH welding tables.

Price list of stainless steel covers for tables with a fi 28 mm or fi 16 mm hole system in a 100x100 mm grid:

| Table top size [mm] | R.R.P.  |
|---------------------|---------|
| 1000x600            | 230 EUR |
| 1000x1000           | 300 EUR |
| 1200x800            | 230 EUR |
| 1200x1000           | 350 EUR |
| 1200x1200           | 390 EUR |
| 1500x1000           | 420 EUR |
| 1500x1480           | 480 EUR |
| 2000x1000           | 530 EUR |
| 2400x1200           | 720 EUR |

Price list of stainless steel covers for tables with a 28 mm or 16 mm hole system in a diagonal grid and for tables with a 16 mm hole system in a 50x50 mm grid:

| Table top size [mm] | R.R.P.  |
|---------------------|---------|
| 1000x600            | 230 EUR |
| 1000x1000           | 320 EUR |
| 1200x800            | 320 EUR |
| 1200x1000           | 370 EUR |
| 1200x1200           | 420 EUR |
| 1500x1000           | 440 EUR |
| 1500x1480           | 510 EUR |
| 2000x1000           | 570 EUR |
| 2400x1200           | 760 EUR |



# WELDING TABLES – STAINLESS

## INOX series – technical parameters

In our offer, you will find the Conventional Welding Tables GPPH INOX, which are available with **PRO** (15 mm) and **PLUS** (12 mm) series worktops. Each of them is available in ten versions of dimensions.

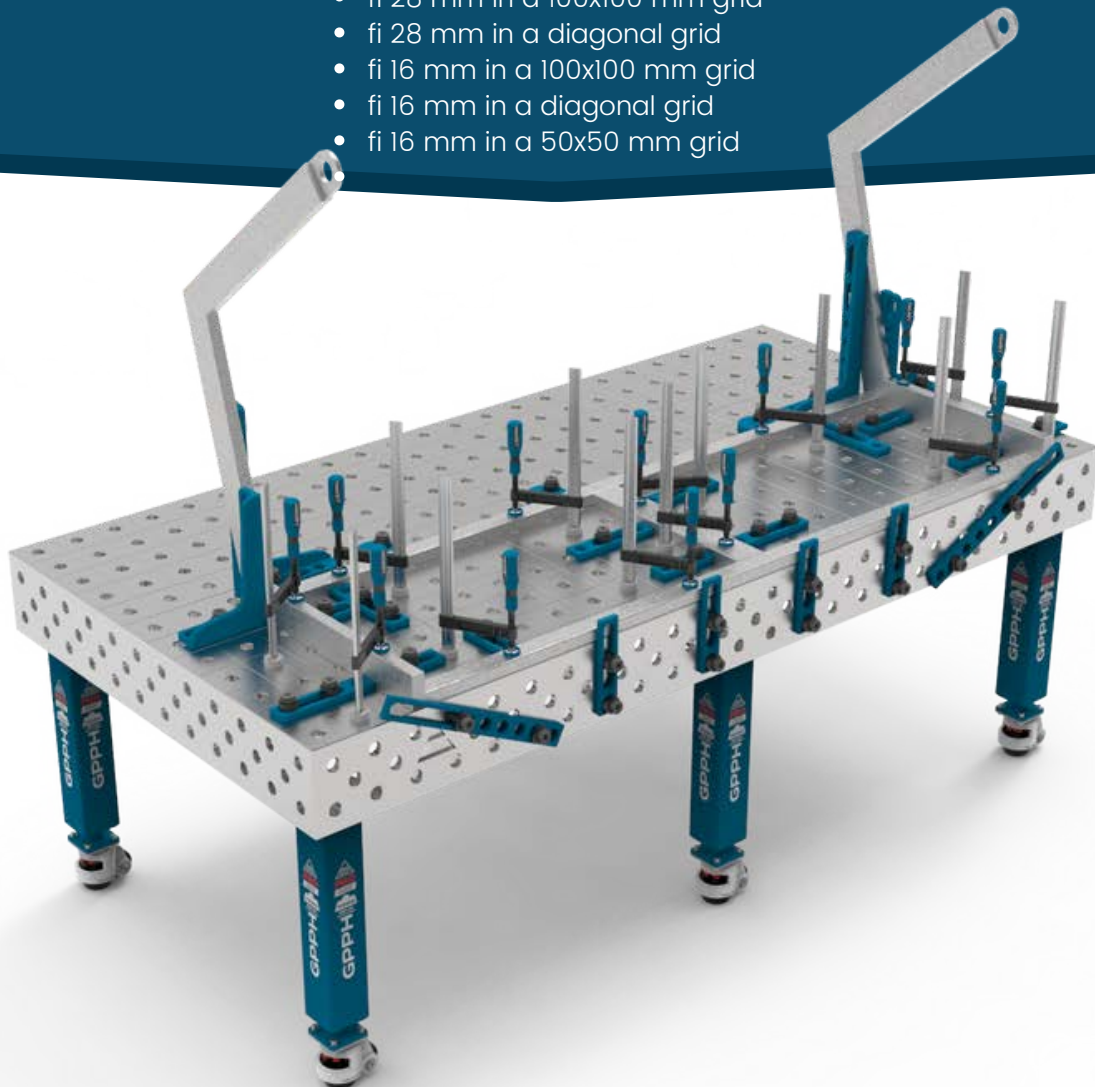
Stainless welding tables from the INOX series are made of 1.4301-grade stainless steel, which is characterized by better electrical conductivity than that of ordinary steel – electrical resistance at temperature 20°C = 0.73 ( $\Omega \text{ mm}^2$ )/m. You can use them where the precise welding of stainless steel is required.

Stainless welding tables are characterized by a high quality of execution and wear resistance. They are made of stainless steel with a high content of chromium which gives them **durability and corrosion resistance**. GPPH INOX welding tables ensure that there is no fear that iron will precipitate and that corrosion spots will be formed while welding stainless steel structures.

By using the INOX tables, your structures will be made **precisely and accurately** without any corrections. They ensure **ergonomic and effective work** while maintaining the high quality and repeatability of the executed structures. Moreover, the INOX tables series is also available in the version with legs on foot or wheels – the given table can be perfectly adapted to your needs.

Depending on your preferences, you may choose the INOX welding tables with worktops from the **PRO** or **PLUS** series with standard opening systems:

- fi 28 mm in a 100x100 mm grid
- fi 28 mm in a diagonal grid
- fi 16 mm in a 100x100 mm grid
- fi 16 mm in a diagonal grid
- fi 16 mm in a 50x50 mm grid



# WELDING TABLES – STAINLESS

## INOX series – technical parameters

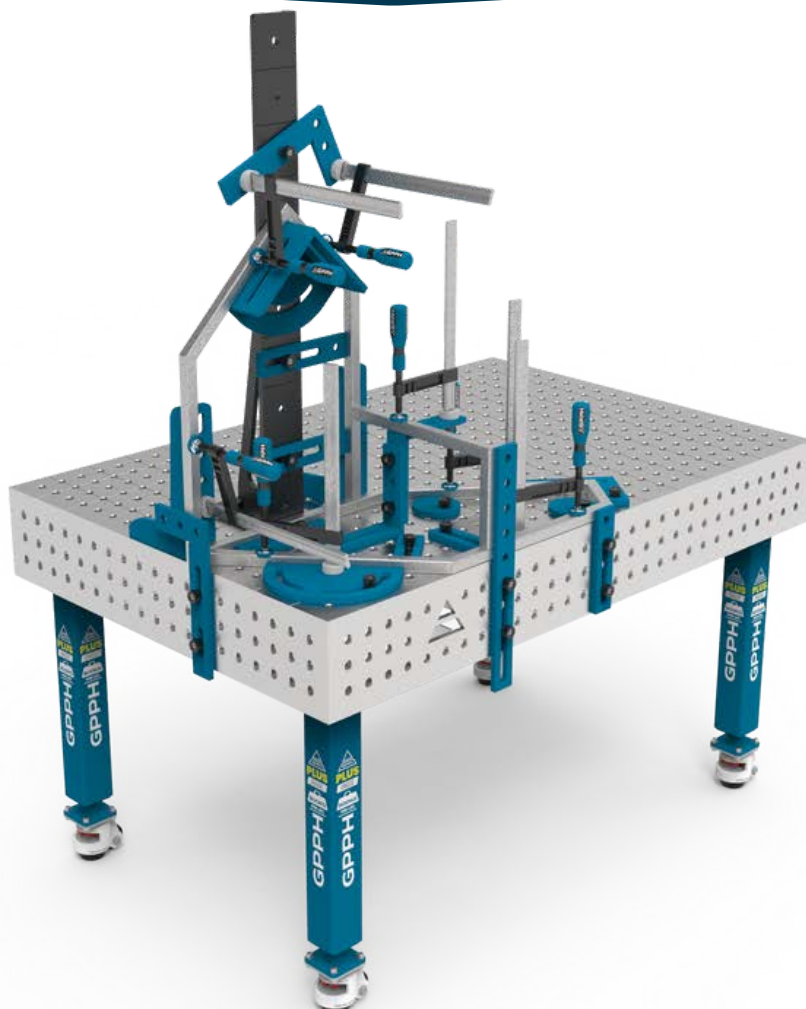
Each worktop in the INOX version has an engraved pitch (more on the engraved pitch you will find on page 3). In addition, as in the case of conventional welding tables, the worktops have **robust and dense ribbing**, which affects the achievement of a **perfectly flat working surface** (tolerance on flatness  $\pm 0.3$  mm on the whole dimension of the worktop). The ribs are arranged every 400 mm on average. The robust and rigid structure of the worktop ensures maximum stability during operation and protects against deformation. The height of the sidewalls is 200 mm and they are made with a deviation tolerance of  $\pm 0.3^\circ$ .

On the INOX series welding tables with **PRO** worktops, you will use the PRO chamfered tools, while for the **PLUS** series worktops – the PLUS series tools. For works on the INOX tables, you may use the standard GPPH tools because they are powder coated. You will be able to execute precisely each flat and three-dimensional structure significantly faster using our tools! PRO series tools are presented on page 28, while the PLUS series is on page 29.

Our cleaning agents GPPH CHEM – **PROTECTOR** and **HD CLEANER** are the ideal solution for cleaning and protecting the INOX series welding tables (more information on page 37).

\*Comparison of **PRO** and **PLUS** series worktops you will find on page 5.

INOX series welding tables with **PRO** and **PLUS** series worktops are available in the following dimensions: 3000x1480 mm\*, 2400x1200 mm, 2000x1000 mm, 1500x1480 mm, 1500x1000 mm, 1200x1200 mm, 1200x1000 mm, 1200x800 mm, 1000x1000 mm, 1000x600 mm.



\* The 3000x1480 GPPH welding table consists of two 1500x1480 GPPH welding tables connected to each other.



# WELDING TABLES – STAINLESS

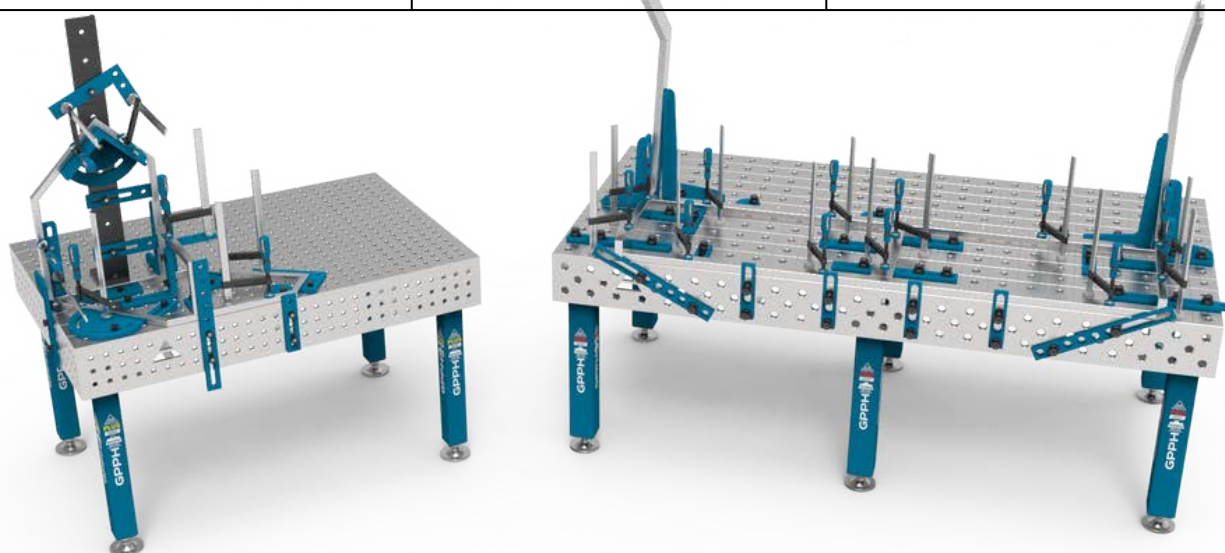
INOX series – dimensions and price list – tables with legs on feet

Price list for INOX tables with legs on feet with a fi 28 mm or fi 16 mm hole system in a 100x100 mm grid:

| Table top size [mm] | R.R.P.<br><b>PRO SERIES</b> worktop | R.R.P.<br><b>PLUS SERIES</b> worktop |
|---------------------|-------------------------------------|--------------------------------------|
| 1000x600            | 7 960 EUR                           | 5 780 EUR                            |
| 1000x1000           | 11 310 EUR                          | 7 710 EUR                            |
| 1200x800            | 10 700 EUR                          | 7 510 EUR                            |
| 1200x1000           | 12 530 EUR                          | 8 730 EUR                            |
| 1200x1200           | 14 070 EUR                          | 9 830 EUR                            |
| 1500x1000           | 14 900 EUR                          | 10 270 EUR                           |
| 1500x1480           | 19 610 EUR                          | 13 500 EUR                           |
| 2000x1000           | 18 510 EUR                          | 12 720 EUR                           |
| 2400x1200           | 24 690 EUR                          | 16 870 EUR                           |
| 3000x1480           | 39 220 EUR                          | 26 990 EUR                           |

Price list for INOX tables with legs on feet with a 28 mm or 16 mm hole system in a diagonal grid and for tables with a 16 mm hole system in a 50x50 mm grid:

| Table top size [mm] | R.R.P.<br><b>PRO SERIES</b> worktop | R.R.P.<br><b>PLUS SERIES</b> worktop |
|---------------------|-------------------------------------|--------------------------------------|
| 1000x600            | 8 770 EUR                           | 6 800 EUR                            |
| 1000x1000           | 12 140 EUR                          | 8 770 EUR                            |
| 1200x800            | 11 570 EUR                          | 8 280 EUR                            |
| 1200x1000           | 13 500 EUR                          | 9 640 EUR                            |
| 1200x1200           | 15 100 EUR                          | 10 790 EUR                           |
| 1500x1000           | 15 950 EUR                          | 10 790 EUR                           |
| 1500x1480           | 20 640 EUR                          | 14 560 EUR                           |
| 2000x1000           | 19 670 EUR                          | 13 820 EUR                           |
| 2400x1200           | 25 980 EUR                          | 18 130 EUR                           |
| 3000x1480           | 41 270 EUR                          | 29 110 EUR                           |



# WELDING TABLES – STAINLESS

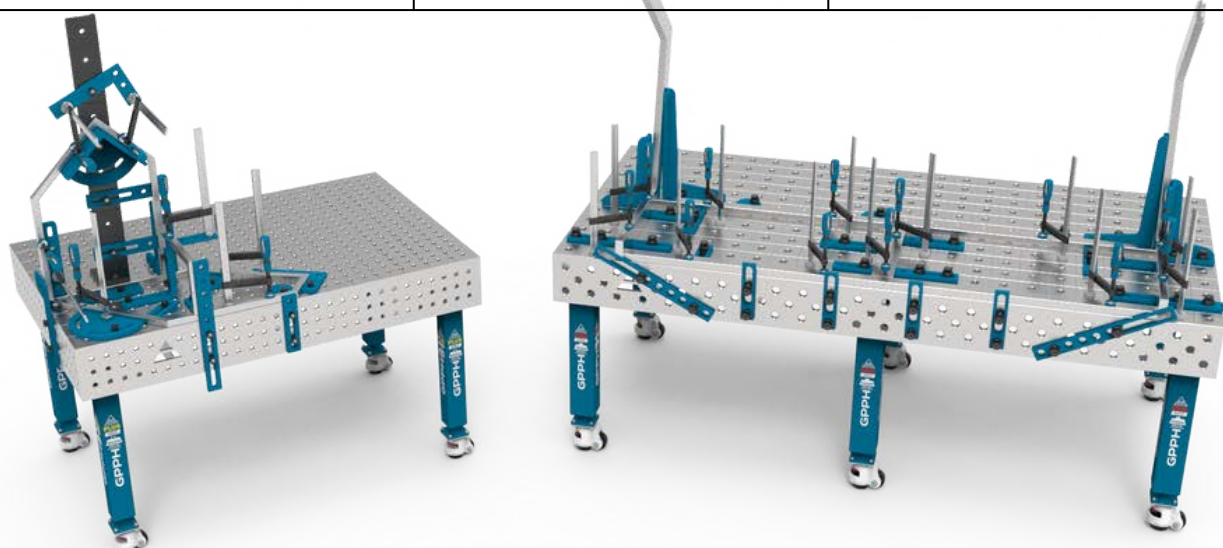
INOX series – dimensions and price list – tables with legs on wheels

Price list for INOX tables with legs on wheels with a fi 28 mm or fi 16 mm hole system in a 100x100 mm grid:

| Table top size [mm] | R.R.P.<br><b>PRO SERIES</b> worktop | R.R.P.<br><b>PLUS SERIES</b> worktop |
|---------------------|-------------------------------------|--------------------------------------|
| 1000x600            | 8 450 EUR                           | 6 200 EUR                            |
| 1000x1000           | 11 810 EUR                          | 8 130 EUR                            |
| 1200x800            | 11 190 EUR                          | 7 940 EUR                            |
| 1200x1000           | 13 020 EUR                          | 9 150 EUR                            |
| 1200x1200           | 14 570 EUR                          | 10 250 EUR                           |
| 1500x1000           | 15 400 EUR                          | 10 700 EUR                           |
| 1500x1480           | 20 110 EUR                          | 13 920 EUR                           |
| 2000x1000           | 19 010 EUR                          | 13 150 EUR                           |
| 2400x1200           | 25 430 EUR                          | 17 510 EUR                           |
| 3000x1480           | 40 210 EUR                          | 27 840 EUR                           |

Price list for INOX tables with legs on wheels with a 28 mm or 16 mm hole system in a diagonal grid and for tables with a 16 mm hole system in a 50x50 mm grid:

| Table top size [mm] | R.R.P.<br><b>PRO SERIES</b> worktop | R.R.P.<br><b>PLUS SERIES</b> worktop |
|---------------------|-------------------------------------|--------------------------------------|
| 1000x600            | 10 840 EUR                          | 8 570 EUR                            |
| 1000x1000           | 14 220 EUR                          | 10 540 EUR                           |
| 1200x800            | 13 640 EUR                          | 10 050 EUR                           |
| 1200x1000           | 15 570 EUR                          | 11 400 EUR                           |
| 1200x1200           | 17 170 EUR                          | 12 560 EUR                           |
| 1500x1000           | 18 020 EUR                          | 13 080 EUR                           |
| 1500x1480           | 22 710 EUR                          | 16 330 EUR                           |
| 2000x1000           | 21 750 EUR                          | 15 590 EUR                           |
| 2400x1200           | 29 100 EUR                          | 20 780 EUR                           |
| 3000x1480           | 45 420 EUR                          | 32 650 EUR                           |



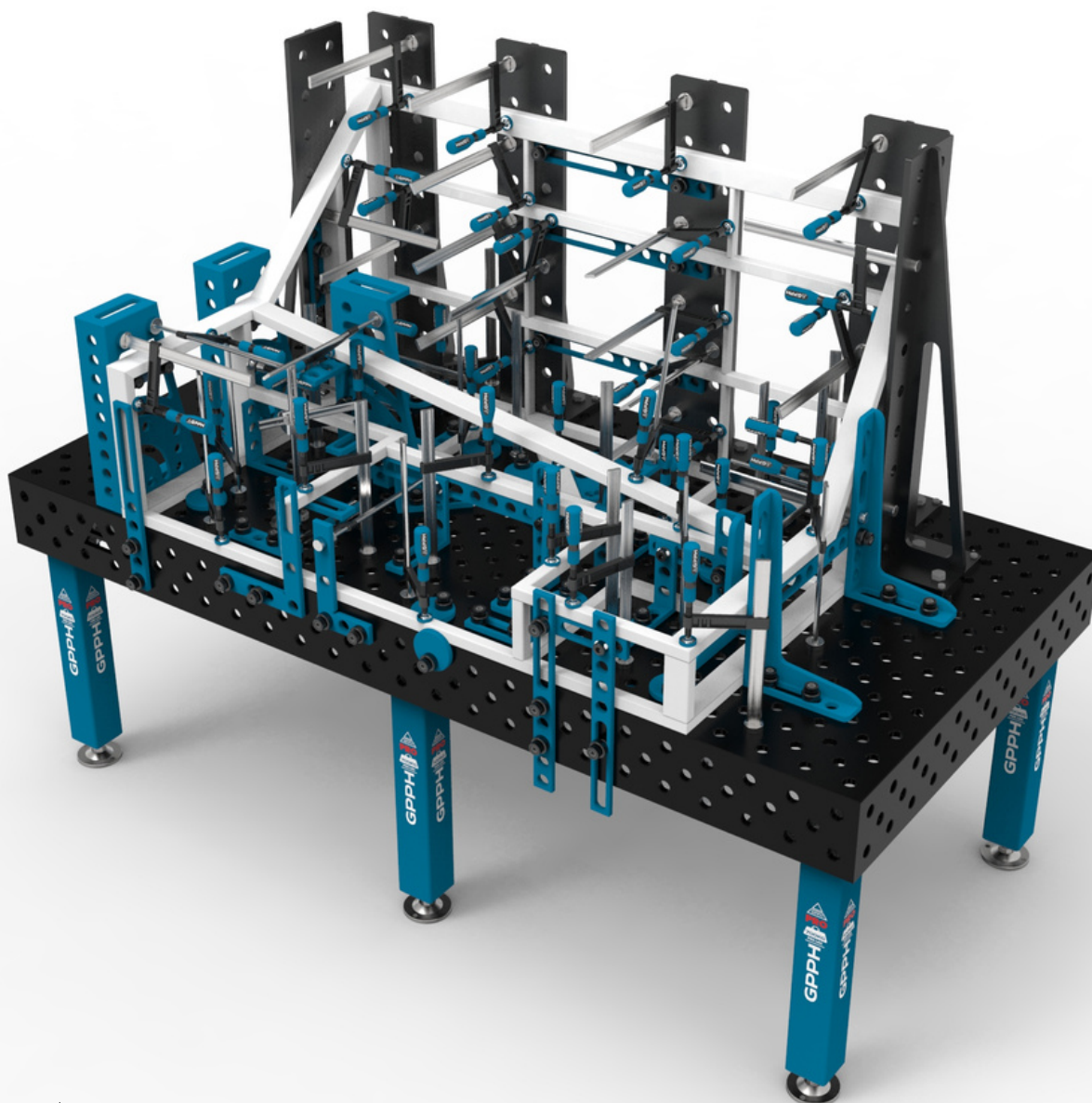


# WELDING TABLES WEIGHTS

weights of traditional and stainless steel welding tables

Weights of traditional and stainless GPPH welding tables\*:

| Table dimensions [mm] | Weight of PRO series | Weight of PRO INOX series | Weight of PLUS series | Weight of PLUS INOX series | Weight of ECO series |
|-----------------------|----------------------|---------------------------|-----------------------|----------------------------|----------------------|
| 1000x600              | 210 kg               | 210 kg                    | 170 kg                | 170 kg                     | 110 kg               |
| 1000x1000             | 280 kg               | 290 kg                    | 230 kg                | 230 kg                     | 150 kg               |
| 1200x800              | 270 kg               | 280 kg                    | 220 kg                | 220 kg                     | 140 kg               |
| 1200x1000             | 320 kg               | 320 kg                    | 260 kg                | 260 kg                     | 170 kg               |
| 1200x1200             | 350 kg               | 360 kg                    | 280 kg                | 290 kg                     | 190 kg               |
| 1500x1000             | 370 kg               | 380 kg                    | 300 kg                | 310 kg                     | 200 kg               |
| 1500x1480             | 490 kg               | 510 kg                    | 390 kg                | 410 kg                     | 270 kg               |
| 2000x1000             | 460 kg               | 480 kg                    | 370 kg                | 380 kg                     | 250 kg               |
| 2400x1200             | 630 kg               | 660 kg                    | 510 kg                | 530 kg                     | 340 kg               |
| 3000x1480             | 980 kg               | 1020 kg                   | 780 kg                | 810 kg                     | 530 kg               |



\*these are approximate values

# WELDING TABLES – MODULAR

## MWT series – technical parameters

**GPPH Modular Welding Tables are available in two variants of the top plates:**

- material: S355J2+N
- material: tool steel subjected to the following treatment processes: nitriding + oxidation

The top of the modular tables consists of milled, sliding plates with a thickness of 15 mm, and by adjusting their surface, you will get **perfect flatness**. The plates are in a system of holes fi 28 mm in a 100x100 mm grid.

They have **milled and chamfered holes** to facilitate the assembly of tools. Modular tables are compatible with tools from the PRO series (more on page 28). In addition, the construction of our modular tables allows you to increase the number of mounting tools placed in the gaps between the tabletop boards – it's improving work ergonomics.

Modular tables have wheels with a foot in the basic legs, with a load capacity of 250 kg per leg. In the versions of extendable modular tables, there are adjustable supports in the additional legs. You can adjust the table high 850 mm – 1150 mm, P=50 mm.

You can combine the tables to get a larger work surface. Optionally, you can also purchase side plates.

### Types of GPPH Modular Welding Tables:

- SINGLE TABLE – we offer three standard versions. They are ideal for small-scale production or serve as the basis for unlimited expansion of the surface of the welding station. They are in three dimensions: 1000x1000, 1200x1200, and 1600x1500.
- EXTENDABLE SINGLE TABLE – each table from our offer can be unfolded thanks to sliding plates and the use of additional legs. They are in three dimensions: 1770x1000, 2170x1200, and 2670x1600.
- DOUBLE TABLE – the most popular sets are sets composed of two single tables. The design of the tables allows expansion in every direction. They are in three dimensions: 2000x1000, 2400x1200, and 3200x1500.
- SET WITH A LARGE WORK SURFACE – connection of two unfolded tables by means of connectors is the perfect solution for spatial construction. They are in three dimensions: 2630x1770, 3030x2170, 4000x2670.

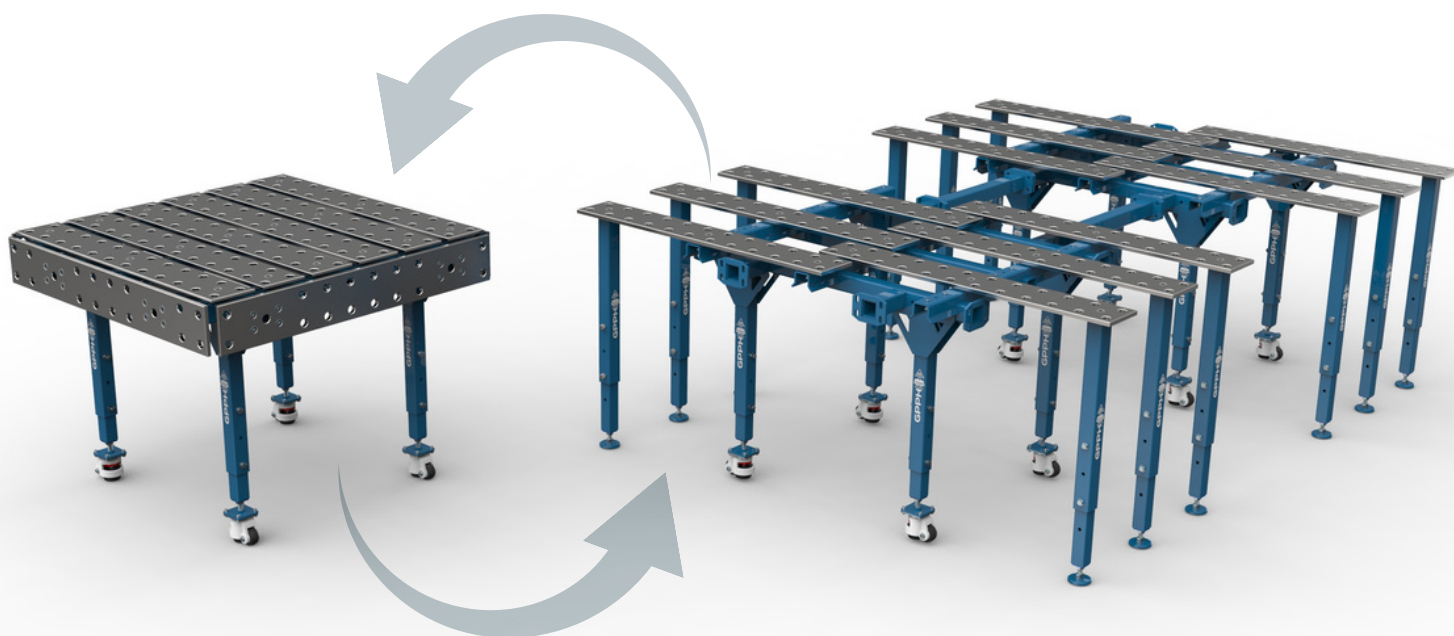


\*the visualizations show Modular Welding Tables. From the top: Single table measuring 1200x1200 mm, Extendable single table measuring 2170x1200 mm, Double table measuring 2400x1200 mm, and Set with a large work surface measuring 2170x3030 mm. All tables in the visualizations have top plates made of S355J2+N steel.

# WELDING TABLES – MODULAR

MWT series – dimensions and price list

| Dimension [mm]   | Material of the top plates:<br>S355J2+N | Material of the top plates:<br>tool steel subjected to the<br>following treatment processes:<br>nitriding + oxidation |
|--|---|---|
| SINGLE TABLE   |   |   |
| 1000x1000  | 3 940 EUR                               | 7 070 EUR   |
| 1200x1200  | 4 370 EUR                               | 8 420 EUR   |
| 1600x1500  | 4 970 EUR                               | 10 950 EUR  |
| EXTENDABLE SINGLE TABLE                                    |   |   |
| 1770x1000  | 4 290 EUR                               | 7 090 EUR   |
| 2170x1200  | 4 790 EUR                               | 8 830 EUR   |
| 2670x1600  | 5 560 EUR                               | 11 570 EUR  |
| DOUBLE TABLE   |   |   |
| 2000x1000  | 7 880 EUR                               | 14 130 EUR  |
| 2400x1200  | 8 730 EUR                               | 16 830 EUR  |
| 3200x1500  | 9 930 EUR                               | 21 890 EUR  |
| SET WITH A LARGE WORK SURFACE                              |   |   |
| 2630x1770  | 8 280 EUR                               | 13 820 EUR  |
| 3030x2170  | 9 080 EUR                               | 17 160 EUR  |
| 4000x2670  | 10 230 EUR                              | 22 180 EUR  |
| SET OF SIDE PLATES   |   |   |
| for a single modular table<br>with dimensions of 1000x1000 | 870 EUR                                 | 2 820 EUR   |
| for a single modular table<br>with dimensions of 1200x1200 | 950 EUR                                 | 3 520 EUR   |
| for a single modular table<br>with dimensions of 1600x1500 | 1 030 EUR                               | 4 140 EUR   |





# WELDING TABLES – WELDING & ASSEMBLY TABLES

## BASIC series – technical parameters

### WHERE WILL YOU USE THE BASIC WELDING TABLE? YOU CAN USE IT WHEREVER WELDING REQUIRES PRECISION.

It does not matter if your welding work is done classically by hand or you use welding robots – BASIC tables are a perfect choice! Your constructions will finally be made accurately, **without unnecessary corrections!**

We have an excellent solution for you if you use a welding robot for your work! The BASIC welding table is **a perfect base for robotic welding** and measuring stations. For such jobs, no side plates use. Therefore, the BASIC Welding Table meets all needs and is **more cost-effective** than Traditional Welding Tables with side plates.

Using milled tools from the PLUS series (see page 29), you will build an appropriate and easy-to-use work environment for making repeatable flat and spatial structures.

BASIC welding tables have:

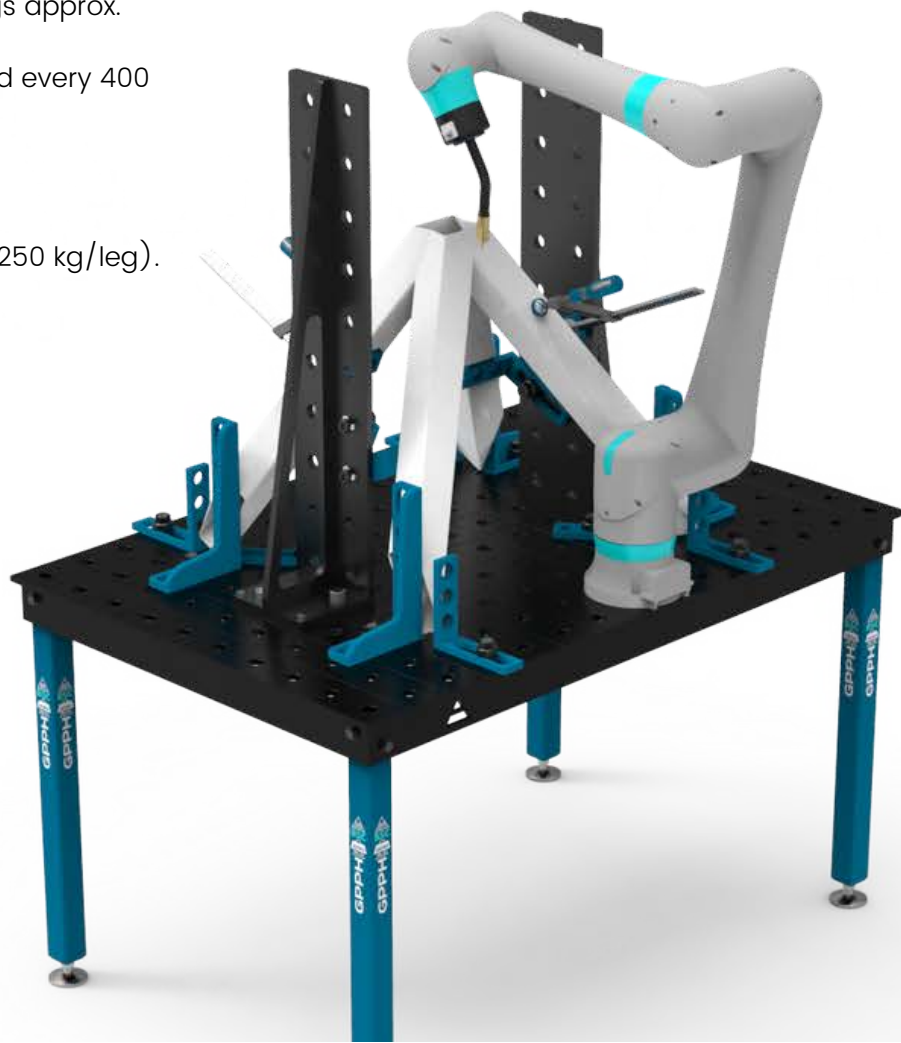
- Perfectly flat work surface [ $\pm 0.3$  mm on whole worktop];
- The massive and rigid base of the tabletop is 80mm high;
- Chamfered and milled holes for easy tool mounting, executed in tolerance  $+0.05$  mm;
- Engraved scale in a 100x100mm grid;
- Height adjustment with standard legs approx. 880–930mm;
- All tables are rib reinforced, arranged every 400 mm on average;
- Milled table top edges;
- Tabletop thickness 12mm;
- Legs made of 60x60mm profile;
- Table load capacity up to 1,500 kg (250 kg/leg).

BASIC tables are available in the hole systems:

- fi 28 mm in a 100x100 mm grid;
- fi 16 mm in a 100x100 mm grid;
- fi 16 mm in a 50x50 mm grid;
- fi 16 mm in diagonal grid.

BASIC welding tables are available in the dimensions:

- 2400x1200,
- 2000x1000,
- 1500x1480,
- 1500x1000,
- 1200x1200,
- 1200x1000,
- 1200x800,
- 1000x1000,
- 1000x600.



# WELDING TABLES – WELDING & ASSEMBLY TABLES

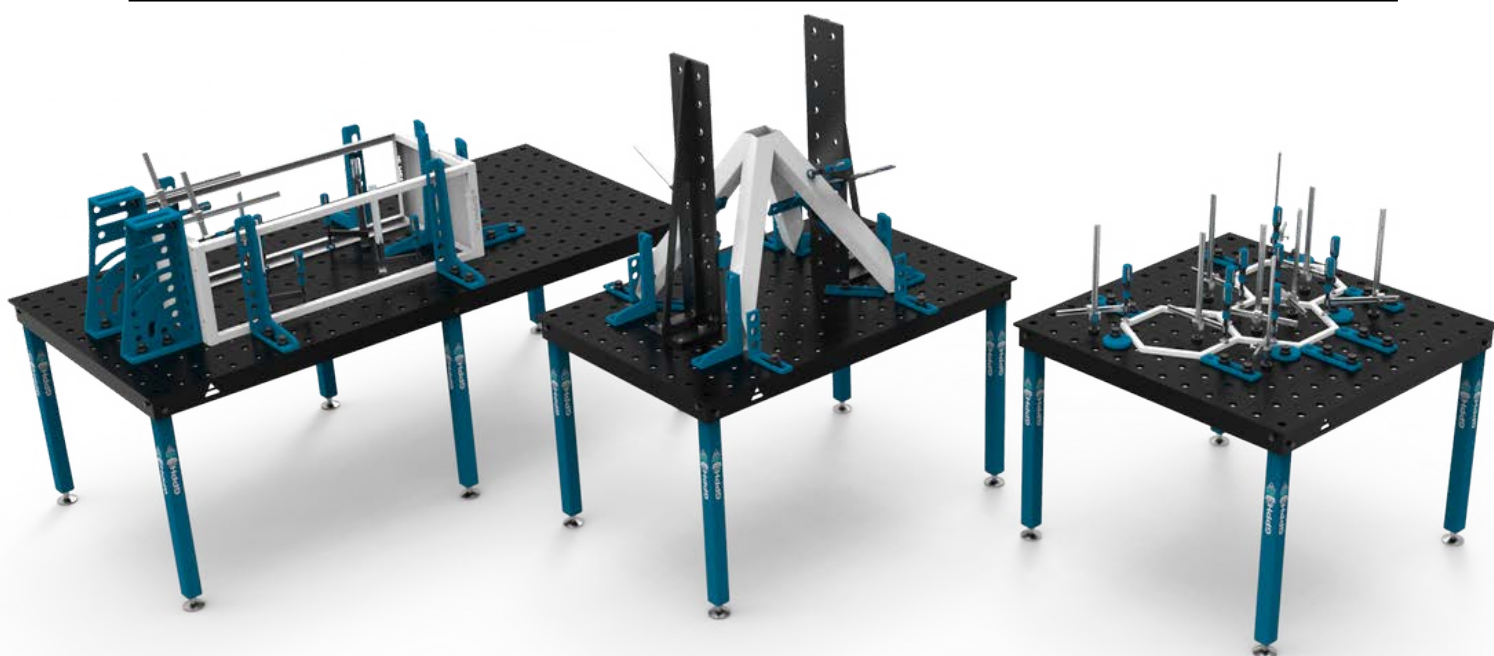
**BASIC** series – dimensions and price list – tables with legs on feet

Price list for tables with legs on feet with a fi 28 mm or fi 16 mm hole system in a 100x100 mm grid:

| Table top size [mm] | R.R.P.    |
|---------------------|-----------|
| 1000x600            | 1 470 EUR |
| 1000x1000           | 1900 EUR  |
| 1200x800            | 1820 EUR  |
| 1200x1000           | 2 050 EUR |
| 1200x1200           | 2 300EUR  |
| 1500x1000           | 2 360 EUR |
| 1500x1480           | 3 070 EUR |
| 2000x1000           | 2 880 EUR |
| 2400x1200           | 3 850 EUR |

Price list for tables with legs on feet with a 16 mm hole system in a diagonal grid and for tables with a 16 mm hole system in a 50x50 mm grid:

| Table top size [mm] | R.R.P.    |
|---------------------|-----------|
| 1000x600            | 1 660 EUR |
| 1000x1000           | 2 070 EUR |
| 1200x800            | 2 050 EUR |
| 1200x1000           | 2 300 EUR |
| 1200x1200           | 2 490 EUR |
| 1500x1000           | 2 590 EUR |
| 1500x1480           | 2 590 EUR |
| 2000x1000           | 3 170 EUR |
| 2400x1200           | 4 140 EUR |



# WELDING TABLES – WELDING & ASSEMBLY TABLES

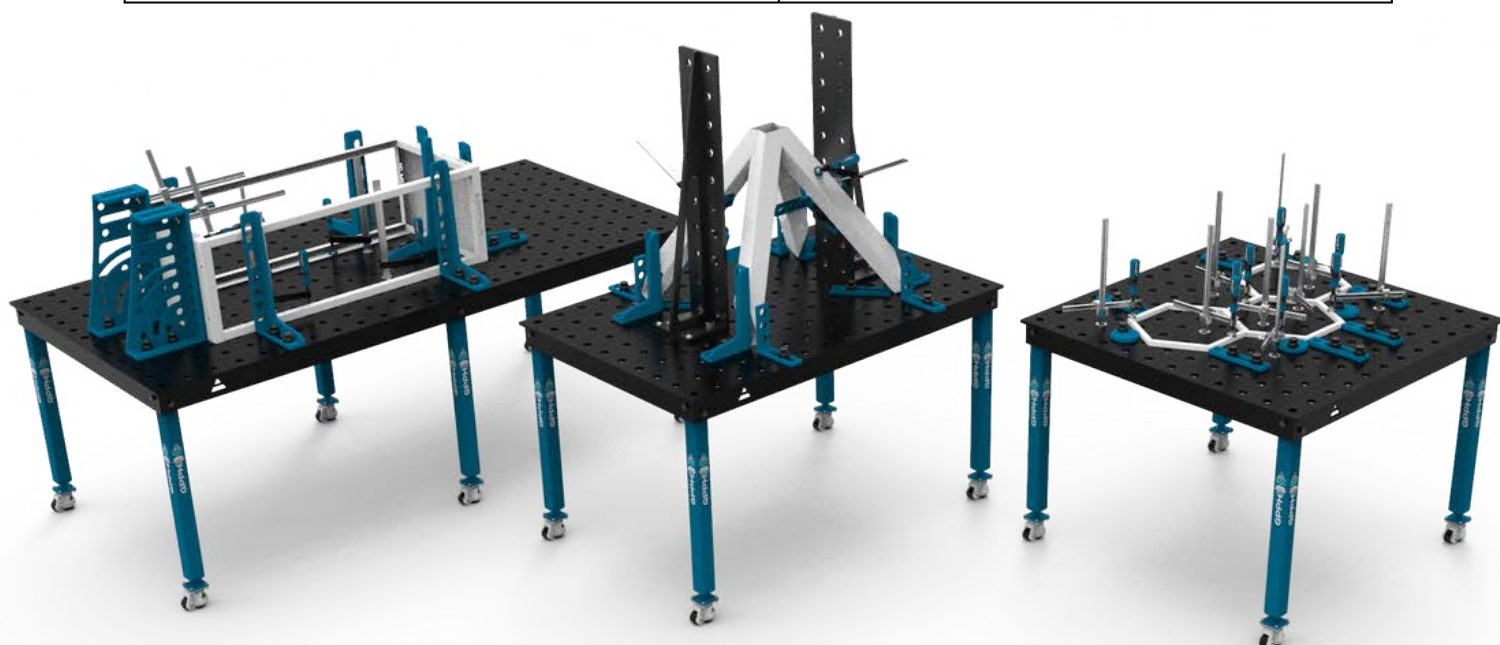
**BASIC** series – dimensions and price list – tables with legs on wheels

Price list for tables with legs on wheels with a fi 28 mm or fi 16 mm hole system in a 100x100 mm grid:

| Table top size [mm] | R.R.P.    |
|---------------------|-----------|
| 1000x600            | 1 800 EUR |
| 1000x1000           | 2 230 EUR |
| 1200x800            | 2 150 EUR |
| 1200x1000           | 2 380 EUR |
| 1200x1200           | 2 630 EUR |
| 1500x1000           | 2 690 EUR |
| 1500x1480           | 3 410 EUR |
| 2000x1000           | 3 210 EUR |
| 2400x1200           | 4 340 EUR |

Price list for tables with legs on wheels with a 16 mm hole system in a diagonal grid and for tables with a 16 mm hole system in a 50x50 mm grid:

| Table top size [mm] | R.R.P.    |
|---------------------|-----------|
| 1000x600            | 2 000 EUR |
| 1000x1000           | 2 400 EUR |
| 1200x800            | 2 380 EUR |
| 1200x1000           | 2 630 EUR |
| 1200x1200           | 2 830 EUR |
| 1500x1000           | 2 920 EUR |
| 1500x1480           | 3 660 EUR |
| 2000x1000           | 3 500 EUR |
| 2400x1200           | 4 630 EUR |

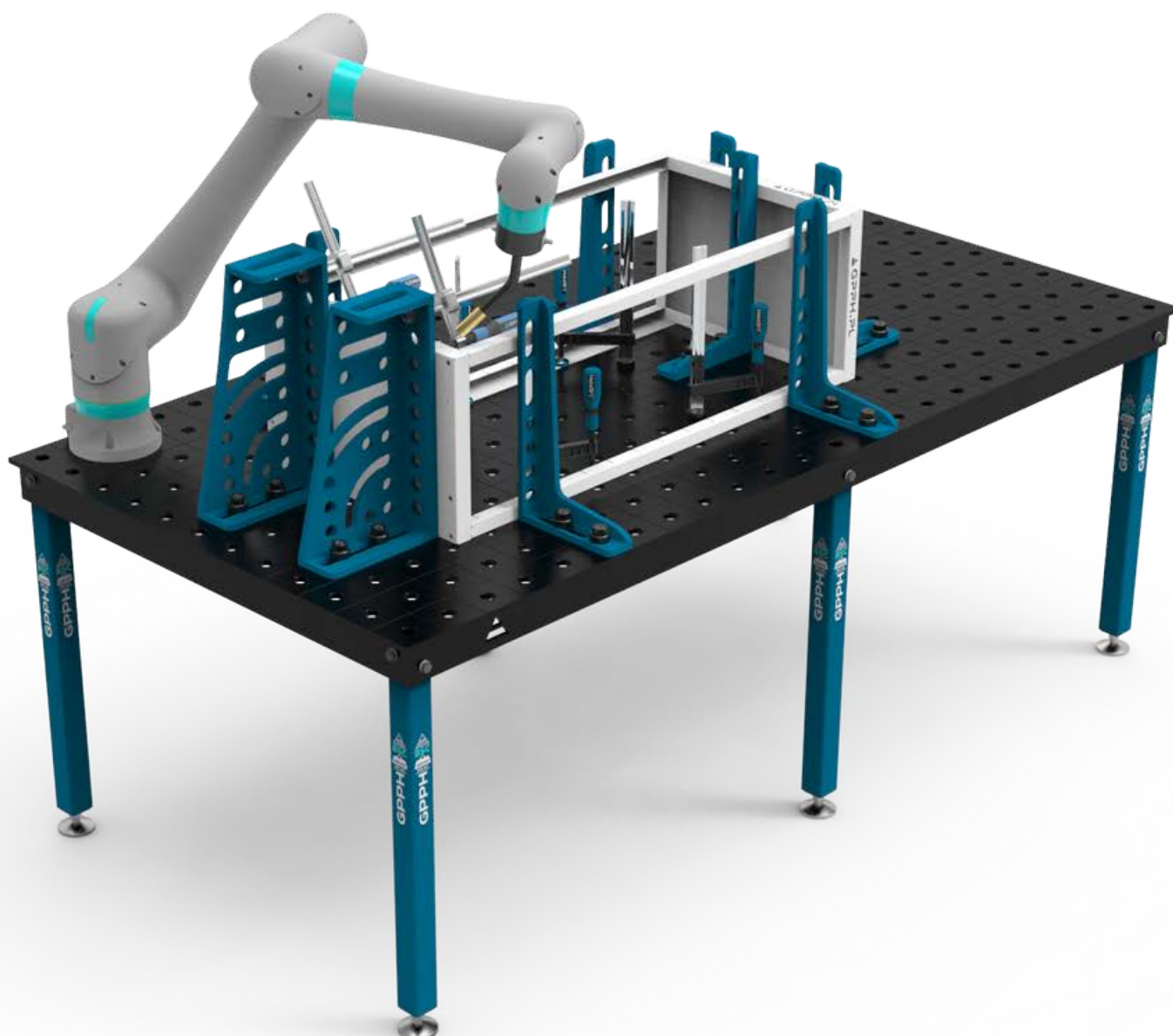


# WELDING TABLES – WELDING & ASSEMBLY TABLES

BASIC series – weights of welding tables

Weights of GPPH welding tables from the BASIC series\*:

| Table top size [mm] | Weight |
|---------------------|--------|
| 1000x600            | 110 kg |
| 1000x1000           | 160 kg |
| 1200x800            | 150 kg |
| 1200x1000           | 180 kg |
| 1200x1200           | 200 kg |
| 1500x1000           | 220 kg |
| 1500x1480           | 300 kg |
| 2000x1000           | 280 kg |
| 2400x1200           | 390 kg |



\*these are approximate values



# WELDING TABLES – WELDING & ASSEMBLY TABLES

## DIY series – technical parameters and price

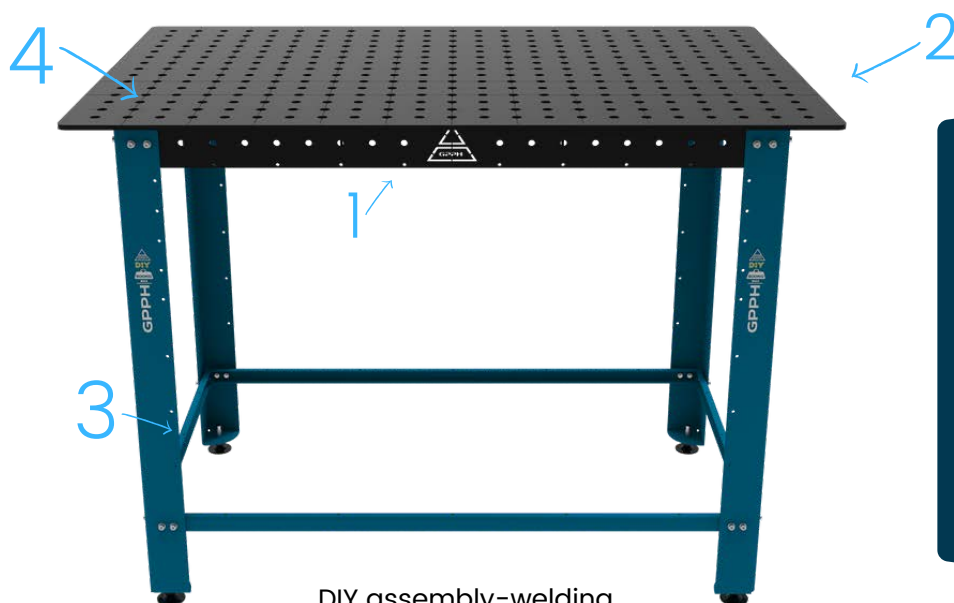
The DIY Welding and Assembly Table has a dimension of 1200x800 mm and is available in the version of holes 16 mm in a 50x50 mm grid. The holes have an execution tolerance of  $\pm 0.1$  mm. In addition, the DIY table has an engraved scale in a 100x100 mm grid. The height of the table is 880 mm. The DIY welding and assembly table is made of S355J2+N material.

DIY tables are **densely ribbed**, which affects their perfect flatness [ $\pm 0,5$  mm on the whole worktop]. In addition, they have equipped with leveling feet that level the unevenness of the floor.

The DIY table top is 8 mm thick. The maximum load capacity of the table is 500 kg. The table weight is approx. 90 kg. This product will be perfect not only for the welder and the DIY enthusiast, carpenter, and car mechanic, as an auxiliary table for CNC machines and various workshops.

For DIY tables, tools from the PLUS series are compatible with the fast assembly bolt 19-22 ECO/PLUS (see tools on page 30).

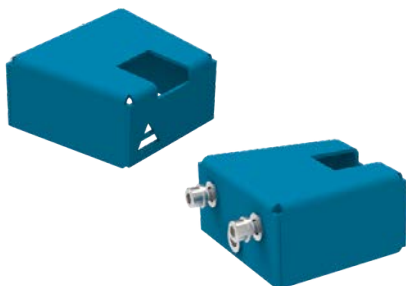
### ASSEMBLY-WELDING TABLE DIY CONSISTS OF:



DIY assembly-welding table R.R.P.: 1 470 EUR

1. Metal rigid frame reinforced with ribs
2. Working table 8 [mm] thick made of S355J2+N steel
3. Legs equipped with leveling feet to compensate for unevenness of the flooring
4. Engraved scale in the grid 100x100 [mm] and assembly holes of system 16, in the grid 50x50 [mm]

### ADDITIONAL ACCESSORIES FOR DIY TABLES:



Adapter for tool shelves: 30 EUR / pcs.



Set of wheels for DIY table: 90 EUR / 4 pcs.

# WELDING TABLES – WELDING & ASSEMBLY TABLES

## DIY series – toolkits

For DIY welding and assembly tables, we offer two ready-made sets of tools from the PLUS series (you can find a presentation of all tools in this series on page 29) fastened with a fast assembly bolt 19-22 ECO/PLUS (see on page 30).

Tool kit no. 1 included shelf adapters to fit a mobile tool shelf to the side of a DIY tabletop.



# WELDING TABLES – LIFTING

with hydraulic lifting system – **XWT** series – technical parameters

GPPH welding tables with hydraulic lifting system are professional tables with automatic adjustment of table top height.

With it you will quickly and easily reach the ideal working height of the table top ensuring high comfort of work.

Welding tables with hydraulic lifting system are equipped with:

- overload valve preventing lifting too heavy loads;
- safety valve stopping the lowering in the case of rupture of the hydraulic lines;
- limit switches protecting against crushing or personal injury.

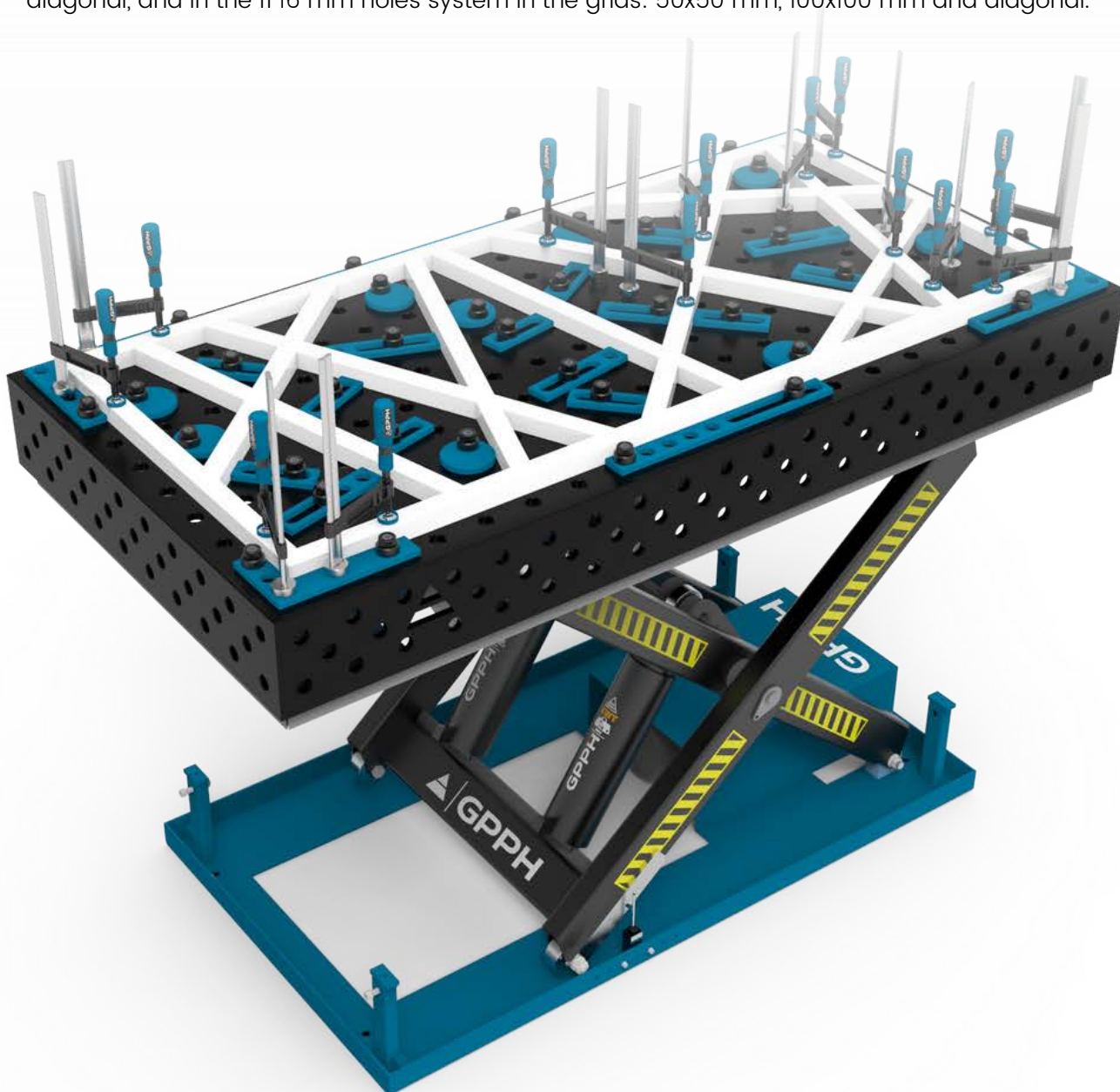
Welding tables with a hydraulic lifting system are available in the series of GPPH welding table tops:

- **PRO**, **PLUS**, and **ECO**, which are made of S355J2+N steel;
- **PRO INOX** and **PLUS INOX**, which are made of stainless steel of the 1.4301 grade.

(Differences between tabletop series can be found on page 5).

Each series is available in 4 sizes: 1500x1000 mm, 1500x1480 mm, 2000x1000 mm, 2400x1200 mm.

Furthermore, each table top is available with  $\varnothing 28$  mm holes in the grids: 100x100 mm and diagonal, and in the  $\varnothing 16$  mm holes system in the grids: 50x50 mm, 100x100 mm and diagonal.





# WELDING TABLES – LIFTING

with hydraulic lifting system – **XWT** series – technical parameters

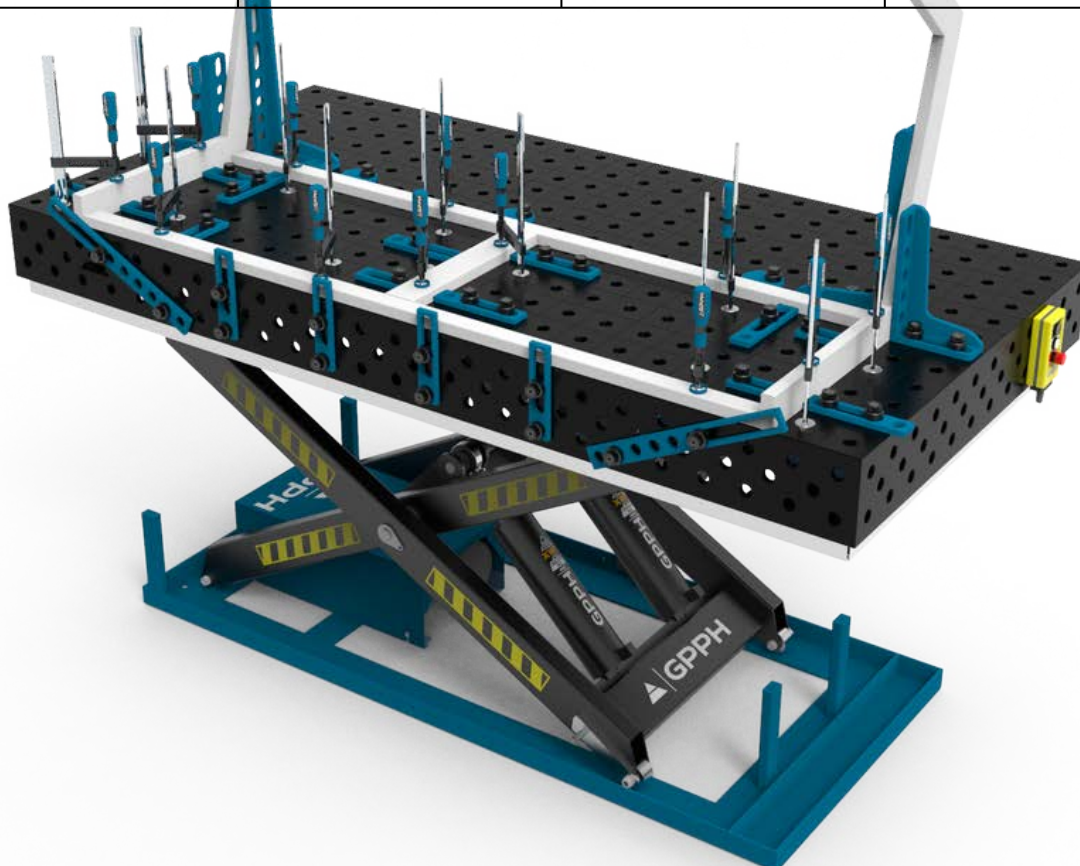
Technical parameters of the base with hydraulic lifting system:

- supply voltage: 400 V
- revolutions: 1400 rpm
- protection class: IP54
- insulation class: F

| Table dimensions [mm] | Max. load capacity [kg] | Lifting time with a load [s] | Max. table height [mm] | Min. table height [mm] | Dimensions of the base of the lifting [mm] | Motor power [kW] |
|-----------------------|-------------------------|------------------------------|------------------------|------------------------|--|------------------|
| 1500x1000             | 1600                    | 20-25                        | 1150                   | 480                    | 1220x785                                   | 2.2              |
| 1500x1480             | 1500                    | 20-25                        | 1450                   | 480                    | 1220x785                                   | 2.2              |
| 2000x1000             | 3500                    | 30-40                        | 1200                   | 550                    | 1863x890                                   | 2.2              |
| 2400x1200             | 3400                    | 45-55                        | 1550                   | 550                    | 2000x900                                   | 2.2              |

Weights of the GPPH welding tables with hydraulic lifting system:

| Table dimensions [mm] | Weight of XWT with table top from the PRO series [kg] | Weight of XWT with table top from the PLUS series [kg] | Weight of XWT with table top from the ECO series [kg] |
|-----------------------|---|--|---|
| 1500x1000             | 638   | 568  | 468   |
| 1500x1480             | 779   | 679  | 559   |
| 2000x1000             | 865   | 775  | 655   |
| 2400x1200             | 1135  | 1015   | 845   |





# WELDING TABLES – LIFTING

with hydraulic lifting system – **XWT** series – dimensions and price list

Price list for the tables with a top made of S355J2+N steel with fi 28 mm and fi 16 mm holes system in a 100x100 mm grid:

| Table top dimension [mm] | PRO SERIES<br>R.R.P. | PLUS SERIES<br>R.R.P. | ECO SERIES<br>R.R.P. |
|--------------------------|----------------------|-----------------------|----------------------|
| 1500x1000                | 8 920 EUR            | 7 400 EUR             | 6 240 EUR            |
| 1500x1480                | 10 060 EUR           | 8 150 EUR             | 7 070 EUR            |
| 2000x1000                | 10 810 EUR           | 9 330 EUR             | 8 230 EUR            |
| 2400x1200                | 12 960 EUR           | 10 770 EUR            | 9 480 EUR            |

Price list for the tables with a top made of S355J2+N steel with fi 28 mm and fi 16 mm holes system in a diagonal grid and for tables with fi 16 mm holes system in a 50x50 mm grid:

| Table top dimension [mm] | PRO SERIES<br>R.R.P. | PLUS SERIES<br>R.R.P. | ECO SERIES<br>R.R.P. |
|--------------------------|----------------------|-----------------------|----------------------|
| 1500x1000                | 9 560 EUR            | 7 880 EUR             | 6 590 EUR            |
| 1500x1480                | 11 010 EUR           | 8 810 EUR             | 7 530 EUR            |
| 2000x1000                | 11 550 EUR           | 9 850 EUR             | 8 630 EUR            |
| 2400x1200                | 13 860 EUR           | 11 490 EUR            | 10 000 EUR           |



# WELDING TABLES – LIFTING

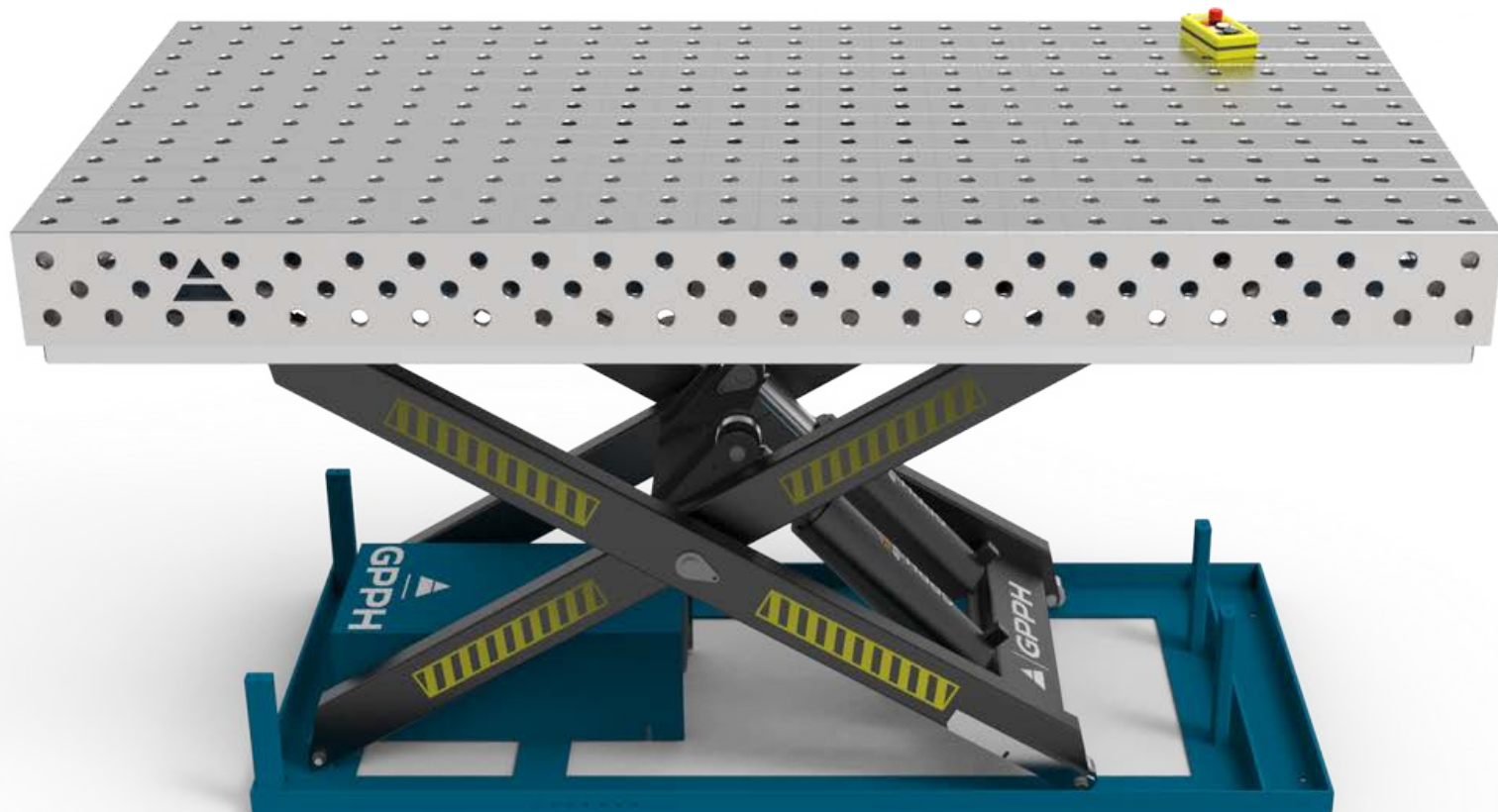
with hydraulic lifting system – **XWT** series – dimensions and price list

Price list for the tables with a top made of stainless steel, grade 1.4301, with fi 28 mm and fi 16 mm holes system in a 100x100 mm grid:

| Table top dimension [mm] | <b>PRO INOX SERIES</b><br>R.R.P. | <b>PLUS INOX SERIES</b><br>R.R.P. |
|--------------------------|----------------------------------|-----------------------------------|
| 1500x1000                | 18 750 EUR                       | 14 110 EUR                        |
| 1500x1480                | 23 740 EUR                       | 17 630 EUR                        |
| 2000x1000                | 23 800 EUR                       | 18 010 EUR                        |
| 2400x1200                | 30 650 EUR                       | 22 840 EUR                        |

Price list for the tables with a top made of stainless steel, grade 1.4301, with fi 28 mm and fi 16 mm holes system in a diagonal grid and for tables with fi 16 mm holes system in a 50x50 mm grid:

| Table top dimension [mm] | <b>PRO SERIES</b><br>R.R.P. | <b>PLUS SERIES</b><br>R.R.P. |
|--------------------------|-----------------------------|------------------------------|
| 1500x1000                | 19 790 EUR                  | 15 160 EUR                   |
| 1500x1480                | 24 770 EUR                  | 18 690 EUR                   |
| 2000x1000                | 24 960 EUR                  | 19 110 EUR                   |
| 2400x1200                | 31 950 EUR                  | 24 090 EUR                   |



# GRINDIG-WELDING STATION

## SOG series – technical parameters

The grinding-welding station is intended for capturing and removing the dust and gases formed during grinding with a hand grinder or welding and metalworking operations. The station may be used with an exhaust fan or fan-powered filter equipment.

The GPPH grinding-welding station is available in three versions:

- Grinding-welding station – base
- Grinding-welding station – base with guards
- Grinding-welding station – base with top exhaust

The workstation base is adapted for the installation of guards and a top extraction system. Each variant of the grinding-welding station consists of a working table with a worktop made of 8 mm thick metal sheet.

Grinding-welding station is available in two versions of dimensions of the worktop:

- 1270x700 mm;
- 1870x770 mm.

Worktop has the assembly holes in a  $\phi 28$  mm system with a 100x100 mm grid and additional holes for extraction of dust and gases.

Grinding-welding station with the covers is equipped with a back cover, while the variant with top extraction – the top extraction system. Both versions (with covers and top extraction) are equipped with tilting doors on the right and left – it allows positioning the items on the table which are longer than the width of the grinding-welding station.

Each SOG version is equipped with a connector  $\phi 160$  mm installed in the side surface of the extraction trough. The air may be exhausted from the bottom through the table of extraction trough. All types of the grinding-welding station are equipped with an extraction trough with drawers, two 230V power outlets for the connection of power tools and a system for the connection of the lighting of the working space.

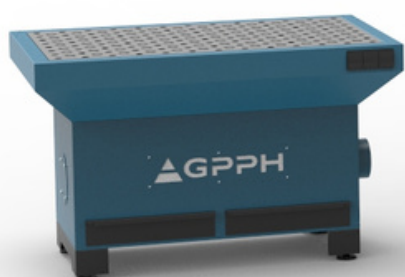
For GPPH grinding-welding stations, you can use PLUS series tools mounted with an adjustable 19–22 ECO/PLUS mandrel (see tools on page 29).



# GRINDIG-WELDING STATION

SOG series – technical parameters and price list

| Parameters for worktop with the dimensions: | 1270x770 mm | 1870x770 mm |
|---|-------------|-------------|
| <b>BASE</b>                                 |             |             |
| Weight                                      | 167 kg      | 225 kg      |
| Resistance of flow                          | 250 Pa      | 250 Pa      |
| Recommended airflow for welding             | 1500 m³/h   | 2200 m³/h   |
| Recommended airflow for grinding            | 3000 m³/h   | 4000 m³/h   |
| R.R.P.                                      | 5 100 EUR   | 7 710 EUR   |
| <b>BASE WITH GUARDS</b>                     |             |             |
| Weight                                      | 190 kg      | 250 kg      |
| Resistance of flow                          | 250 Pa      | 250 Pa      |
| Recommended airflow for welding             | 1500 m³/h   | 2200 m³/h   |
| Recommended airflow for grinding            | 3000 m³/h   | 4000 m³/h   |
| R.R.P.                                      | 5 740 EUR   | 8 000 EUR   |
| <b>BASE WITH TOP EXHAUST</b>                |             |             |
| Weight                                      | 264 kg      | 315 kg      |
| Resistance of flow                          | 250 Pa      | 250 Pa      |
| Recommended airflow for welding             | 1500 m³/h   | 2200 m³/h   |
| Recommended airflow for grinding            | 3000 m³/h   | 4000 m³/h   |
| R.R.P.                                      | 6 880 EUR   | 9 830 EUR   |



BASE



BASE WITH GUARDS



BASE WITH TOP EXHAUST

\*The visualizations present a grinding-welding station with a worktop having the dimensions of 1270x700 mm.



# PRO SERIES TOOLS

dedicated to tables: **PRO**, MWT and **XWT** with PRO series tops

## Flat tools



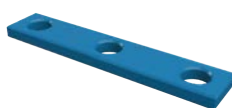
STOP PRO 150

16\_N\_004\_PRO | 28\_N\_004\_PRO



STOP PRO 225

16\_N\_005\_PRO | 28\_N\_005\_PRO



STOP PRO 260

16\_N\_006\_PRO | 28\_N\_006\_PRO



STOP PRO 500

16\_N\_007\_PRO | 28\_N\_007\_PRO



PROTRACTOR PRO

16\_N\_008\_PRO | 28\_N\_008\_PRO



ANGLE PRECISION SQUARE  
(FLAT) PRO 275x150

16\_N\_009\_PRO | 28\_N\_009\_PRO



ANGLE PRECISION SQUARE  
(FLAT) PRO 320x150

16\_N\_010\_PRO | 28\_N\_010\_PRO



ANGLE PRECISION SQUARE  
(FLAT) PRO 350x250

16\_N\_011\_PRO | 28\_N\_011\_PRO



ECCENTRIC STOP  
PRO Ø100mm

16\_N\_003\_PRO | 28\_N\_003\_PRO

## Spatial tools



ANGLE BRACKET  
PRO 185x175

16\_N\_012\_PRO | 28\_N\_012\_PRO



ANGLE BRACKET  
PRO 200x200

16\_N\_013\_PRO | 28\_N\_013\_PRO



ANGLE BRACKET  
PRO 300x190

16\_N\_014\_PRO | 28\_N\_014\_PRO



ANGLE BRACKET  
PRO 450x250

16\_N\_015\_PRO | 28\_N\_015\_PRO



ANGLE BRACKET  
PRO 275x500x175x100

16\_N\_016\_PRO | 28\_N\_016\_PRO

## Increasing working surface



TABLE EXTENSION  
PRO 1000X100

16\_100x100\_N\_017\_PRO  
28\_100x100\_N\_017\_PRO

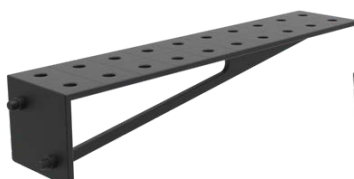
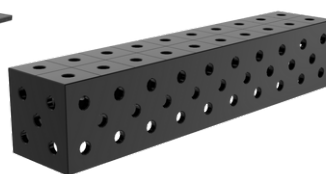


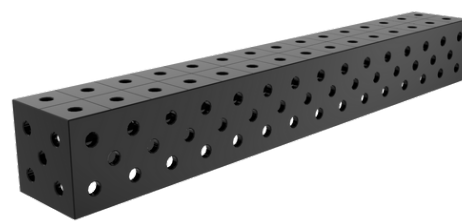
TABLE EXTENSION  
PRO 1000X200

16\_100x100\_N\_018\_PRO  
28\_100x100\_N\_018\_PRO



WELDING CONNECTION BLOCK  
PRO 1000X200X200

16\_50x50\_N\_019\_PRO  
16\_100x100\_N\_019\_PRO  
28\_100x100\_N\_019\_PRO



WELDING CONNECTION BLOCK  
PRO 1500X200X200

16\_50x50\_N\_020\_PRO  
16\_100x100\_N\_020\_PRO  
28\_100x100\_N\_020\_PRO

## Assembly tools



MOUNTING PIN PRO

16\_T\_015\_PRO | 28\_T\_015\_PRO



FAST ASSEMBLY BOLT  
30 PRO

16\_N\_002\_PRO | 28\_N\_002\_PRO



MAGNETIC FAST ASSEMBLY  
BOLT PRO

16\_N\_002\_PRO\_MG  
28\_N\_002\_PRO\_MG



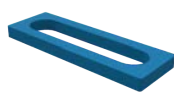
FAST ASSEMBLY BOLT UNI

16\_N\_002\_UNI | 28\_N\_002\_UNI

# PLUS SERIES TOOLS

dedicated to tables: **PLUS**, **BASIC**, and **XWT** with PLUS series tops  
as well as for tables: **ECO**, **DIY**, **XWT** with tops from the ECO series and for **SOG** stations\*\*

## Flat tools



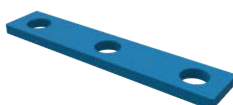
STOP PLUS 150

16\_N\_004\_PLUS | 28\_N\_004\_PLUS



STOP PLUS 225

16\_N\_005\_PLUS | 28\_N\_005\_PLUS



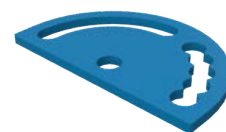
STOP PLUS 260

16\_N\_006\_PLUS | 28\_N\_006\_PLUS



STOP PLUS 500

16\_N\_007\_PLUS | 28\_N\_007\_PLUS



PROTRATOR PLUS

16\_N\_008\_PLUS | 28\_N\_008\_PLUS



ANGLE PRECISION SQUARE  
(FLAT) PLUS 275x150

16\_N\_009\_PLUS | 28\_N\_009\_PLUS



ANGLE PRECISION SQUARE  
(FLAT) PLUS 320x150

16\_N\_010\_PLUS | 28\_N\_010\_PLUS



ANGLE PRECISION SQUARE  
(FLAT) PLUS 350x250

16\_N\_011\_PLUS | 28\_N\_011\_PRO



ECCENTRIC STOP  
PLUS Ø100mm

16\_N\_003\_PLUS | 28\_N\_003\_PLUS

## Spatial tools



ANGLE BRACKET  
PLUS 185x175

16\_N\_012\_PLUS | 28\_N\_012\_PLUS



ANGLE BRACKET  
PLUS 200x200

16\_N\_013\_PLUS | 28\_N\_013\_PLUS



ANGLE BRACKET  
PLUS 300x190

16\_N\_014\_PLUS | 28\_N\_014\_PLUS



ANGLE BRACKET  
PLUS 450x250

16\_N\_015\_PLUS | 28\_N\_015\_PLUS



ANGLE BRACKET  
PLUS 275x500x175x100

16\_N\_016\_PLUS | 28\_N\_016\_PLUS

## Increasing working surface



TABLE EXTENSION  
PLUS 1000x100

16\_100x100\_N\_017\_PLUS  
28\_100x100\_N\_017\_PLUS

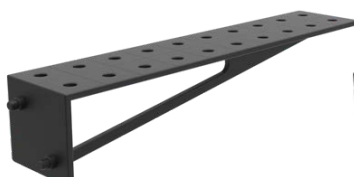
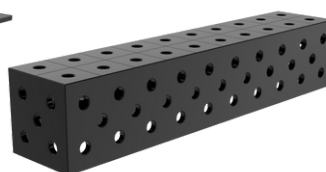


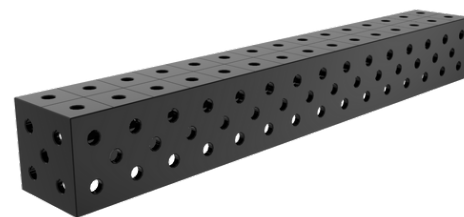
TABLE EXTENSION  
PLUS 1000x200

16\_100x100\_N\_018\_PLUS  
28\_100x100\_N\_018\_PLUS



WELDING CONNECTION BLOCK  
PLUS 1000x200x200

16\_50x50\_N\_019\_PLUS  
16\_100x100\_N\_019\_PLUS  
28\_100x100\_N\_019\_PLUS



WELDING CONNECTION BLOCK  
PLUS 1500x200x200

16\_50x50\_N\_020\_PLUS  
16\_100x100\_N\_020\_PLUS  
28\_100x100\_N\_020\_PLUS

## Assembly tools



MOUNTING PIN PLUS

16\_T\_015\_PLUS | 28\_T\_015\_PLUS



FAST ASSEMBLY BOLT  
23 PLUS

16\_N\_002\_PLUS | 28\_N\_002\_PLUS



MAGNETIC FAST ASSEMBLY  
BOLT PLUS

16\_N\_002\_PLUS\_MG  
28\_N\_002\_PLUS\_MG



FAST ASSEMBLY BOLT UNI

16\_N\_002\_UNI | 28\_N\_002\_UNI

\*all tools are available in fi 16 mm and fi 28 mm holes.

\*\*in this case (tables: ECO, DIY, XWT with an ECO series top and SOG stands), the tools are mounted with a fast assembly bolt 19-22 ECO/PLUS - you will find it on page 30.

# ECO SERIES TOOLS

dedicated to increasing the working surface of ECO tables and for mounting PLUS series tools on tables: ECO, DIY, XWT series with ECO series tops and on SOG stations\*\*

## Increasing working surface



TABLE EXTENSION  
ECO 1000X100  
16\_100x100\_N\_017\_ECO  
28\_100x100\_N\_017\_ECO

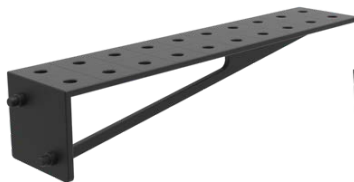
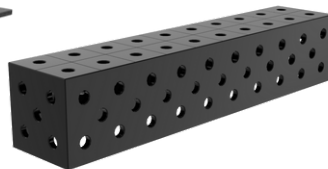


TABLE EXTENSION  
ECO 1000X200  
16\_100x100\_N\_018\_ECO  
28\_100x100\_N\_018\_ECO



WELDING CONNECTION BLOCK  
ECO 1000X200X200  
16\_50x50\_N\_019\_ECO  
16\_100x100\_N\_019\_ECO  
28\_100x100\_N\_019\_ECO



WELDING CONNECTION BLOCK  
ECO 1500X200X200  
16\_50x50\_N\_020\_ECO  
16\_100x100\_N\_020\_ECO  
28\_100x100\_N\_020\_ECO

## Assembly tools



MOUNTING PINECO  
16\_T\_015\_ECO | 28\_T\_015\_ECO



FAST ASSEMBLY BOLT  
19-22 ECO/PLUS  
16\_N\_002\_ECO\_PLUS  
28\_N\_002\_ECO\_PLUS



MAGNETIC FAST ASSEMBLY  
BOLT PLUS  
16\_N\_002\_PLUS\_MG  
28\_N\_002\_PLUS\_MG



FAST ASSEMBLY BOLT UNI  
16\_N\_002\_UNI | 28\_N\_002\_UNI



\*all tools are available in fi 16 mm and fi 28 mm holes.

\*\*in this case, the tools are mounted using the 19-22 PLUS/ECO adjustable mandrel - you will find it on this page in the "Assembly tools" section

# UNIVERSAL TOOLS

dedicated to all GPPH tables and stations

## Fastening clamps



FASTENING CLAMP  
16\_N\_001A | 28\_N\_001A



FASTENING CLAMP  
WITH LEVER  
16\_N\_001B | 28\_N\_001B



VARIABLE THROAT  
DEPTH CLAMP  
16\_N\_001C | 28\_N\_001C



VARIABLE THROAT DEPTH  
WITH LEVER CLAMP  
16\_N\_001D | 28\_N\_001D



FASTENING CLAMP  
16\_N\_001E | 28\_N\_001E



FASTENING CLAMP  
WITH LEVER  
16\_N\_001F | 28\_N\_001F

## Prisms, welding torch handle



PRISM Ø58MM 130°  
16\_N\_021 | 28\_N\_021



PRISM Ø58MM 130°/90°  
16\_N\_023 | 28\_N\_023

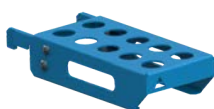


PRISM Ø58MM 90°  
16\_N\_022 | 28\_N\_022



WELDING TORCH HANDLE  
N\_024

## Mobile tool shelves



FAST ASSEMBLY BOLT SHELF S  
16\_T\_011A | 28\_T\_011A



FAST ASSEMBLY BOLT SHELF M  
16\_T\_011B | 28\_T\_011B



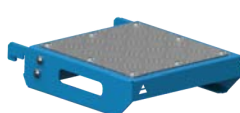
CLAMP SHELF S  
16\_T\_011C | 28\_T\_011C



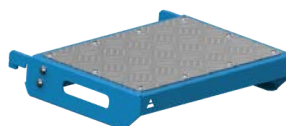
CLAMP SHELF M  
16\_T\_011D | 28\_T\_011D



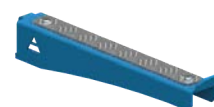
FLAT SHELF S  
16\_T\_011E | 28\_T\_011E



FLAT SHELF M  
16\_T\_011F | 28\_T\_011F



FLAT SHELF L  
16\_T\_011G | 28\_T\_011G



MOBILE SHELF FOR EXTENSIONS  
T\_011J



MIX SHELF  
16\_T\_011H | 28\_T\_011H



DOCUMENTATION SHELF  
16\_T\_011I | 28\_T\_011I

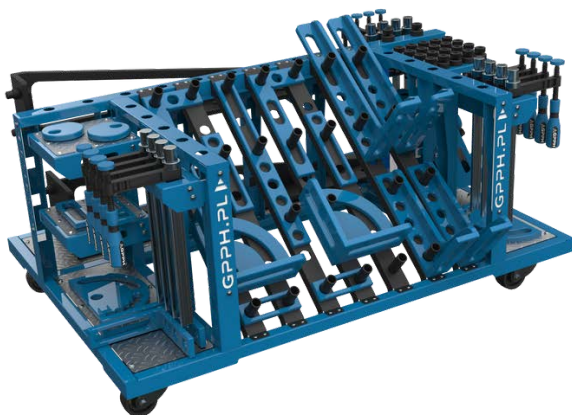


# TOOL TROLLEYS

maintaining order at the workplace

## Tool trolley M

16\_T\_012B | 28\_T\_012B



One of the many advantages of the small tool trolley is that it fits under most dimensions of GPPH Welding Tables. You have all the tools at your fingertips while working!

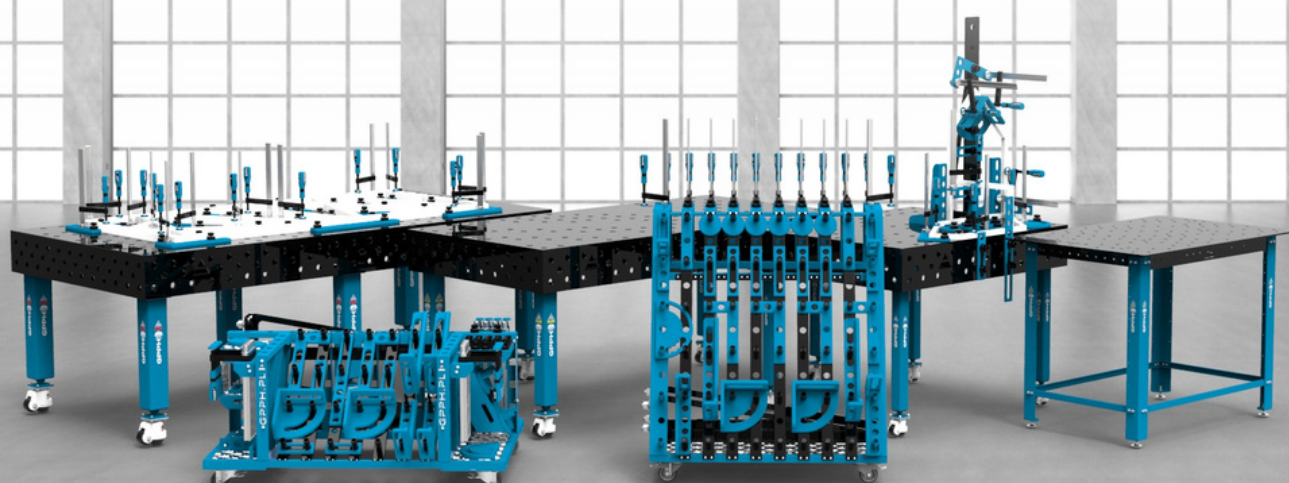
## Tool trolley L

16\_T\_012A | 28\_T\_012A

The large GPPH tool trolley will accommodate a set of tools even for the most demanding user! Thanks to it, your workplace will become transparent like never before, and GPPH tools will be clearly arranged and more accessible.



\*tool trolleys are available in the version of holes fi 16 mm and fi 28 mm. You can check the price of tool trolleys on page 34.



# TOOLS

## price list

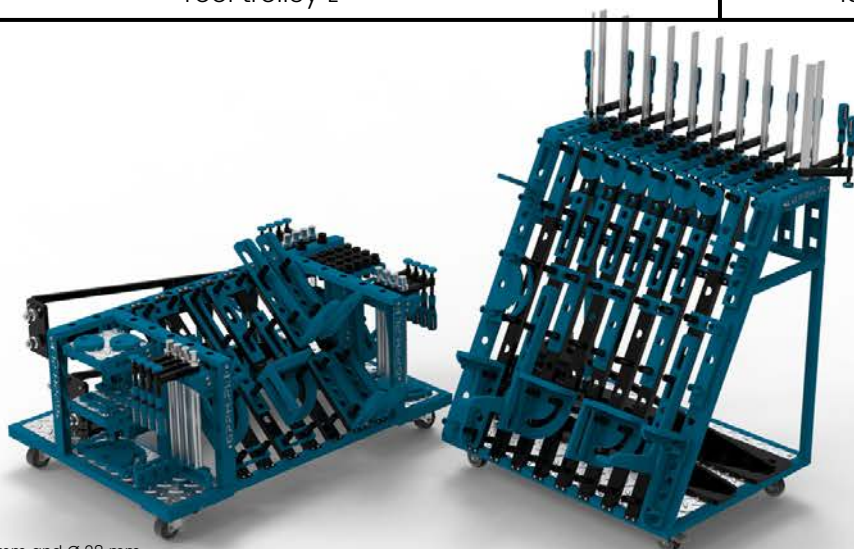
| TOOL  | R.R.P.     |             |            |
|---|------------|-------------|------------|
|   | PRO SERIES | PLUS SERIES | ECO SERIES |
| FLAT TOOLS  |            |             |            |
| Stop 150  | 60 EUR     | 50 EUR      |            |
| Stop 225  | 70 EUR     | 50 EUR      |            |
| Stop 260  | 70 EUR     | 60 EUR      |            |
| Stop 500  | 110 EUR    | 80 EUR      |            |
| Protractor  | 120 EUR    | 100 EUR     |            |
| Angle precision square (flat) 275x150                                     | 100 EUR    | 90 EUR      |            |
| Angle precision square (flat) 320x150                                     | 110 EUR    | 100 EUR     |            |
| Angle precision square (flat) 350x250                                     | 130 EUR    | 120 EUR     |            |
| Eccentric stop Ø100   | 60 EUR     | 50 EUR      |            |
| SPATIAL TOOLS   |            |             |            |
| Angle bracket 185x175   | 140 EUR    | 100 EUR     |            |
| Angle bracket 200x200   | 210 EUR    | 170 EUR     |            |
| Angle bracket 300x190   | 170 EUR    | 150 EUR     |            |
| Angle bracket 450x250   | 230 EUR    | 210 EUR     |            |
| Angle bracket 275x500x175x100   | 460 EUR    | 360 EUR     |            |
| INCREASING WORKING SURFACE  |            |             |            |
| Table extension 1000x100  | 440 EUR    | 330 EUR     | 280 EUR    |
| Table extension 1000x200  | 560 EUR    | 420 EUR     | 320 EUR    |
| Welding connection block 1000x200x200<br>Ø16 mm, grid 50x50 mm            | 990 EUR    | 800 EUR     | 600 EUR    |
| Welding connection block 1000x200x200<br>Ø16 mm / Ø28 mm, grid 100x100 mm | 870 EUR    | 690 EUR     | 470 EUR    |
| Welding connection block 1500x200x200 Ø16 mm,<br>grid 50x50 mm            | 1 240 EUR  | 1 010 EUR   | 740 EUR    |
| Welding connection block 1500x200x200<br>Ø16 mm / Ø28 mm, grid 100x100 mm | 1 160 EUR  | 970 EUR     | 640 EUR    |
| ASSEMBLY TOOLS  |            |             |            |
| Mounting pin  | 20 EUR     | 20 EUR      | 20 EUR     |
| Fast assembly bolt 30 PRO   | 70 EUR     |             |            |
| Fast assembly bolt 23 PLUS  |            | 60 EUR      |            |
| Fast assembly bolt 19-22 ECO/PLUS   |            |             | 60 EUR     |
| Magnetic fast assembly bolt PRO   | 70 EUR     |             |            |
| Magnetic fast assembly bolt PLUS  |            | 70 EUR      |            |
| Fast assembly bolt UNI  | 90 EUR     |             |            |

\*prices apply to tools in the version of Ø 16 mm and Ø 28 mm.

# TOOLS

## price list

| TOOL                                  | R.R.P.   |
|---------------------------------------|----------|
| <b>FASTENING CLAMPS</b>               |          |
| Fastening clamp                       | 60 EUR   |
| Fastening clamp with lever            | 110 EUR  |
| Variable throat depth clamp           | 140 EUR  |
| Variable throatdepth with lever clamp | 190 EUR  |
| Fastening clamp                       | 90 EUR   |
| Fastening clamp with lever            | 150 EUR  |
| <b>PRISMS, WELDING TORCH HANDLE</b>   |          |
| Prism Ø58mm 130°                      | 30 EUR   |
| Prism Ø58mm 130°/90°                  | 40 EUR   |
| Prism Ø58mm 90°                       | 30 EUR   |
| Welding torch handle                  | 50 EUR   |
| <b>MOBILE TOOL SHELVES</b>            |          |
| Fast assembly bolt shelf S            | 40 EUR   |
| Fast assembly bolt shelf M            | 40 EUR   |
| Clamp shelf S                         | 40 EUR   |
| Clamp shelf M                         | 40 EUR   |
| Flat shelf S                          | 50 EUR   |
| Flat shelf M                          | 50 EUR   |
| Flat shelf L                          | 60 EUR   |
| Mobile shelf for extensions           | 30 EUR   |
| MIX shelf                             | 70 EUR   |
| Documentation shelf                   | 50 EUR   |
| <b>TOOL TROLLEYS</b>                  |          |
| Tool trolley M                        | 1300 EUR |
| Tool trolley L                        | 1300 EUR |

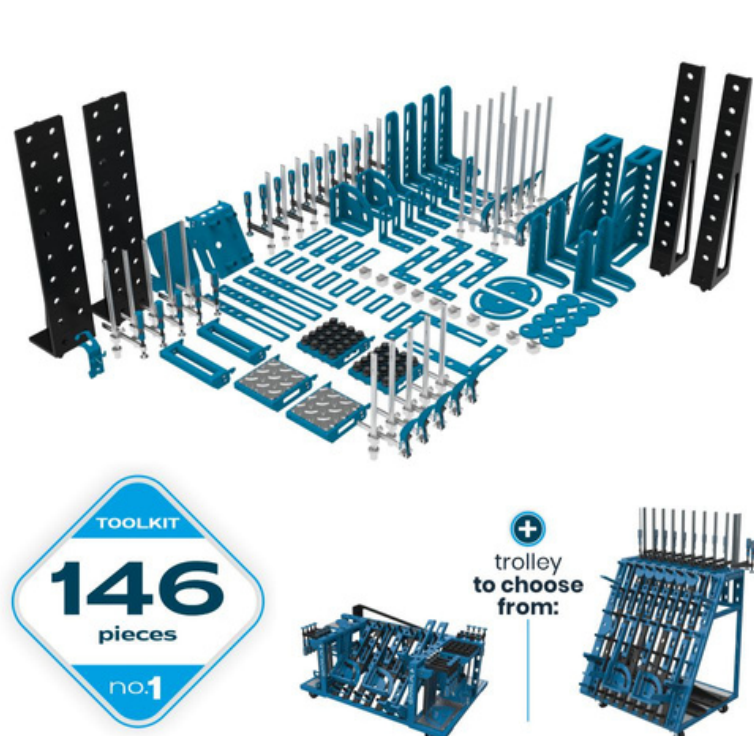


\*prices apply to tools in the version of Ø 16 mm and Ø 28 mm.

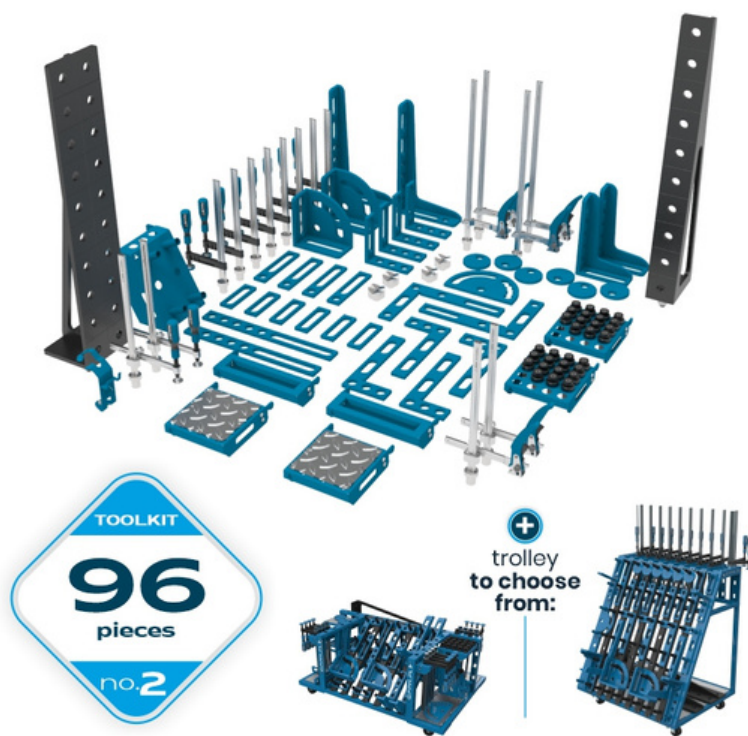


# TOOLKITS

each toolkit is available in the PRO and PLUS series tool\*\*



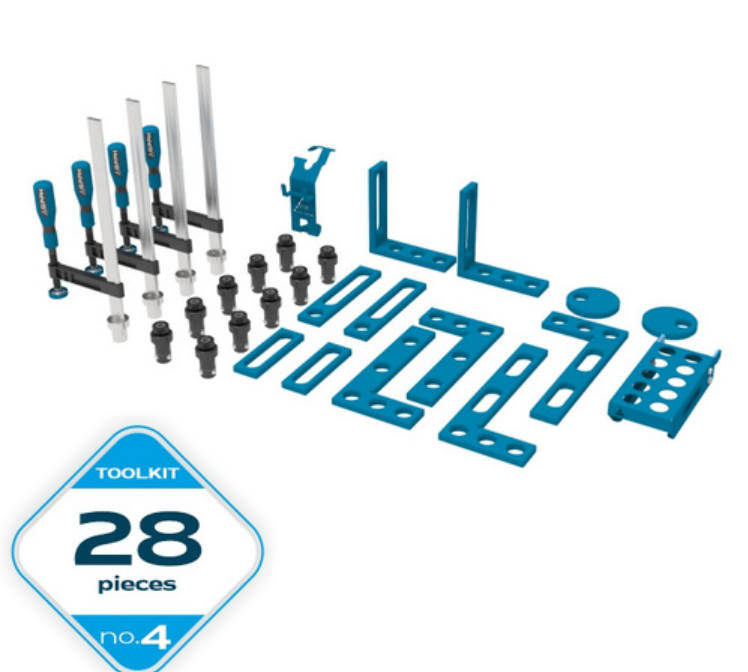
R.R.P. of toolkit no. 1 of the PRO series tool: 16 180 EUR  
R.R.P. of toolkit no. 1 of the PLUS series tool: 14 270 EUR



R.R.P. of toolkit no. 2 of the PRO series tool: 9 900 EUR  
R.R.P. of toolkit no. 2 of the PLUS series tool: 8 860 EUR



R.R.P. of toolkit no. 3 of the PRO series tool: 4 910 EUR  
R.R.P. of toolkit no. 3 of the PLUS series tool: 4 310 EUR



R.R.P. of toolkit no. 4 of the PRO series tool: 1 990 EUR  
R.R.P. of toolkit no. 4 of the PLUS series tool: 1 740 EUR

\*all tools are available in the version Ø 16 mm and Ø 28 mm.

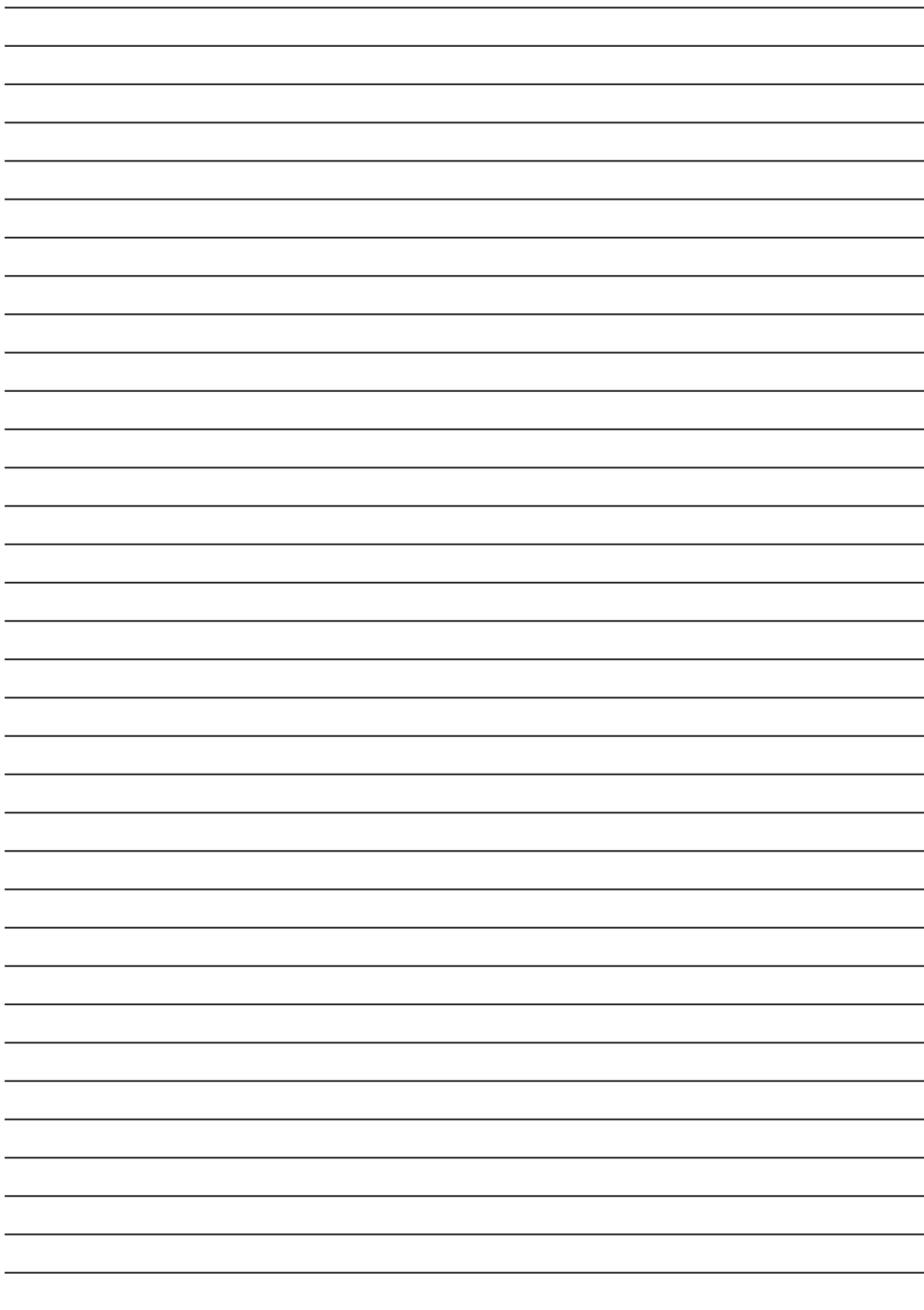
\*\*in the case of sets with tools from the PLUS series, depending on the thickness of the tabletop, the fast assembly bolt included in the set changes - in the case of PLUS, BASIC, and XWT tables with PLUS series top, it is the Fast assembly bolt 23 PLUS, and in the case of ECO, DIY, XWT tables with ECO series top and SOG stations, it is fast assembly bolt 19-22 ECO/PLUS.

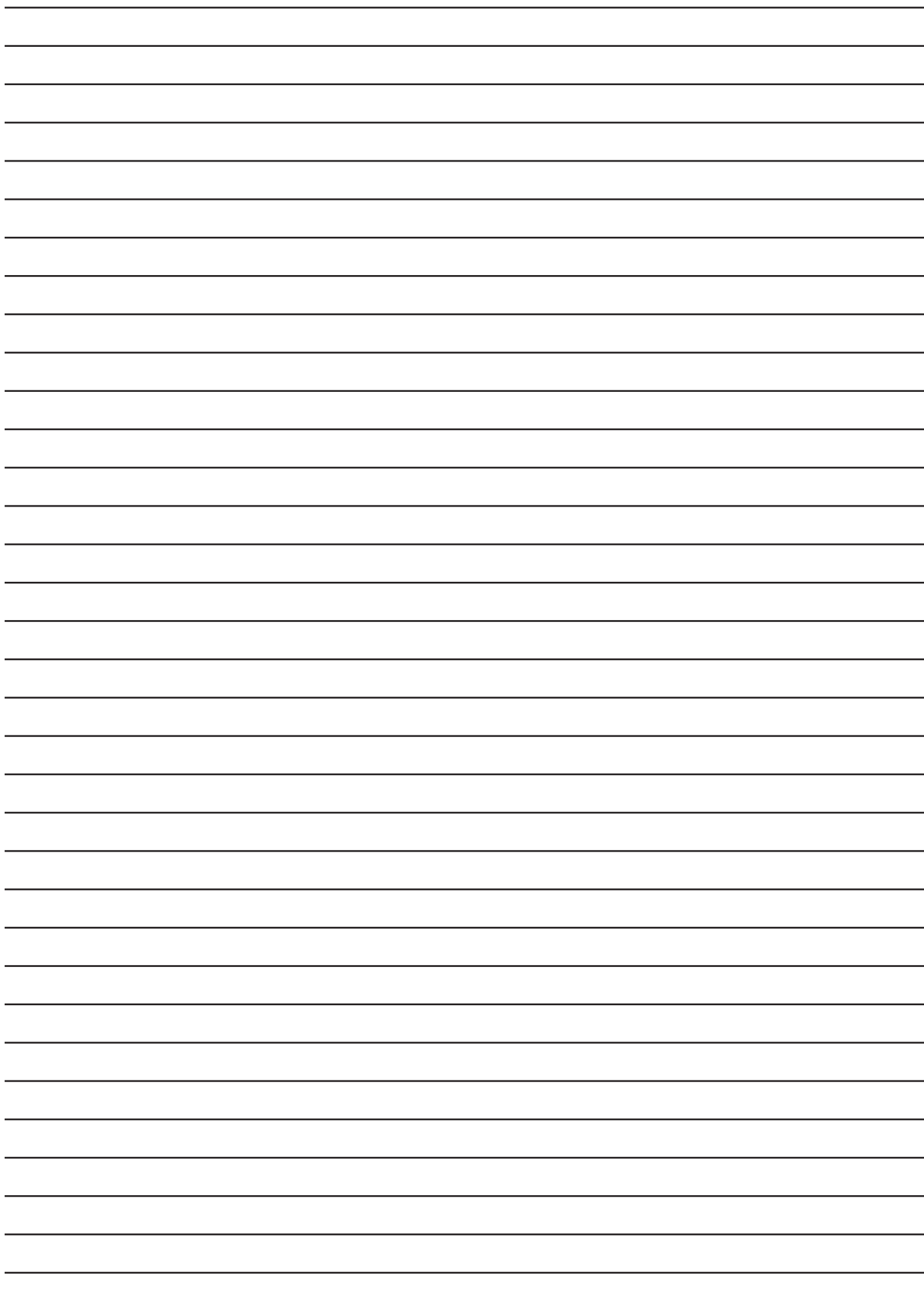


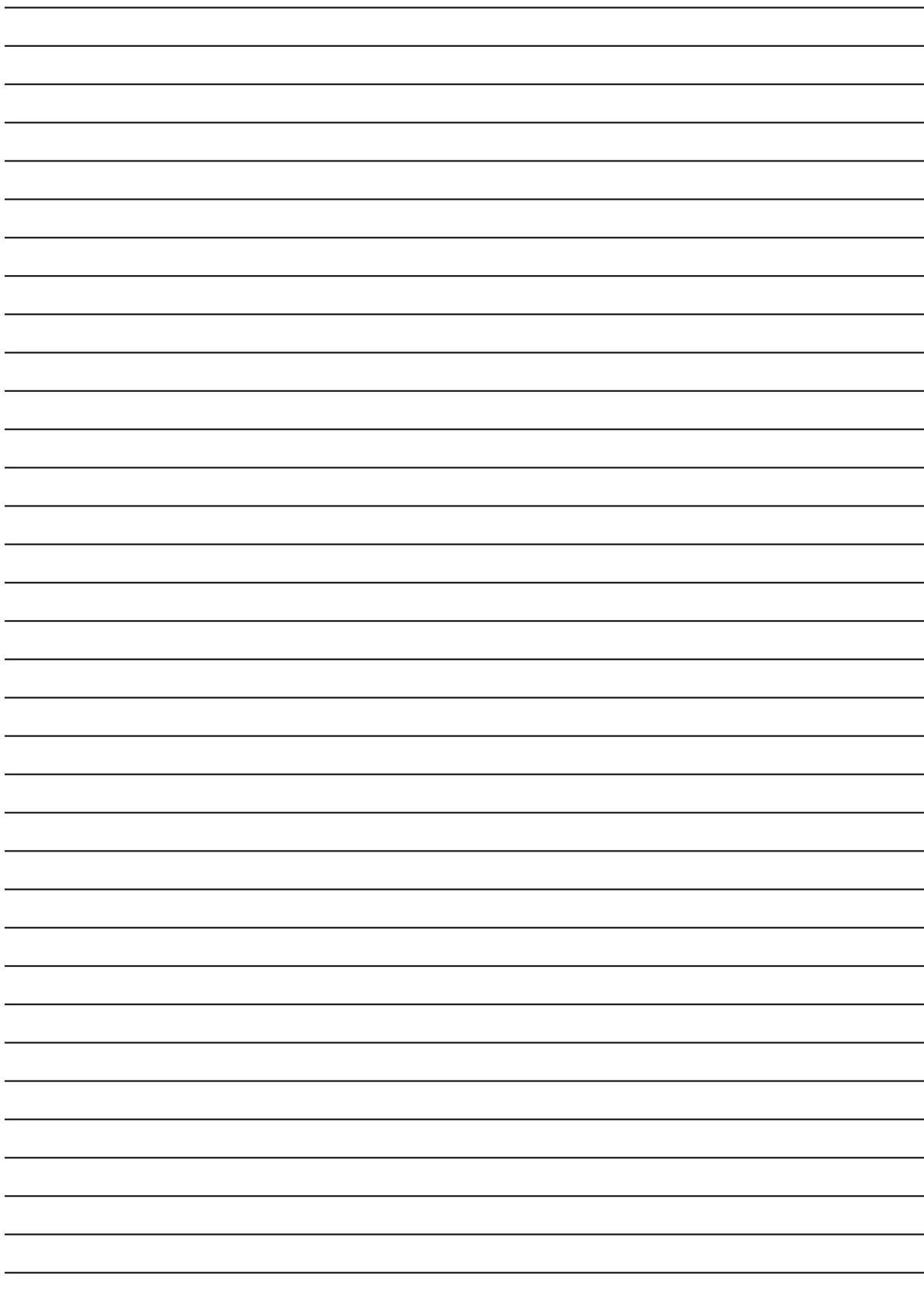
# TOOLKITS

each toolkit is available in the PRO and PLUS series tool\*\*

| Number of tools included in the set                  |               |               |               |               |
|--|---------------|---------------|---------------|---------------|
| Tool   | Toolkit no. 1 | Toolkit no. 2 | Toolkit no. 3 | Toolkit no. 4 |
| Fastening clamp                                      | 10            | 8             | 8             | 4             |
| Fastening clamp with lever                           | 10            | 4             | 2             | -             |
| Variable throat depth clamp                          | 5             | 2             | -             | -             |
| Variable throatdepth with lever clamp                | 5             | 2             | -             | -             |
| Fast assembly bolt                                   | 40            | 30            | 18            | 10            |
| Eccentric stop Ø100                                  | 8             | 6             | 4             | 2             |
| Stop 150   | 8             | 6             | 4             | 2             |
| Stop 225   | 4             | 4             | 4             | 2             |
| Stop 500   | 4             | 2             | -             | -             |
| Protractor   | 2             | 1             | 1             | -             |
| Angle precision square (flat) 275x150                | -             | -             | -             | 2             |
| Angle precision square (flat) 320x150                | 4             | 4             | 2             | 2             |
| Angle precision square (flat) 350x250                | 2             | 2             | 2             | -             |
| Angle bracket 185x175                                | 8             | 4             | 4             | 2             |
| Angle bracket 200x200                                | 2             | 2             | 2             | -             |
| Angle bracket 300x190                                | 4             | 2             | 2             | -             |
| Angle bracket 450x250                                | 4             | 2             | 1             | -             |
| Angle bracket 275x500x175x100                        | 2             | -             | -             | -             |
| Table extension 1000x100                             | 2             | 1             | -             | -             |
| Table extension 1000x200                             | 2             | 1             | -             | -             |
| Welding torch handle                                 | 1             | 1             | 1             | 1             |
| Prism Ø58mm 130°                                     | 10            | -             | -             | -             |
| Prism Ø58mm 130°/90°                                 | -             | 4             | 2             | -             |
| Tool trolley<br>(versions to choose: M or L)         | 1             | 1             | -             | -             |
| Fast assembly bolt shelf S                           | -             | -             | -             | 1             |
| Fast assembly bolt shelf M                           | 2             | 2             | 1             | -             |
| Clamp shelf M  | 2             | 2             | 1             | -             |
| Flat shelf M   | 2             | 2             | 1             | -             |
| MIX shelf  | 1             | 1             | -             | -             |
| Documentation shelf                                  | 1             | -             | -             | -             |
| <b>The total number of tools included in the set</b> | <b>146</b>    | <b>96</b>     | <b>60</b>     | <b>28</b>     |











+48 / 573-568-355



GPPH@GPPH.pl



ul. Ractawicka 7  
39-300 Mielec, Poland

[www.GPPH-GROUP.com](http://www.GPPH-GROUP.com)